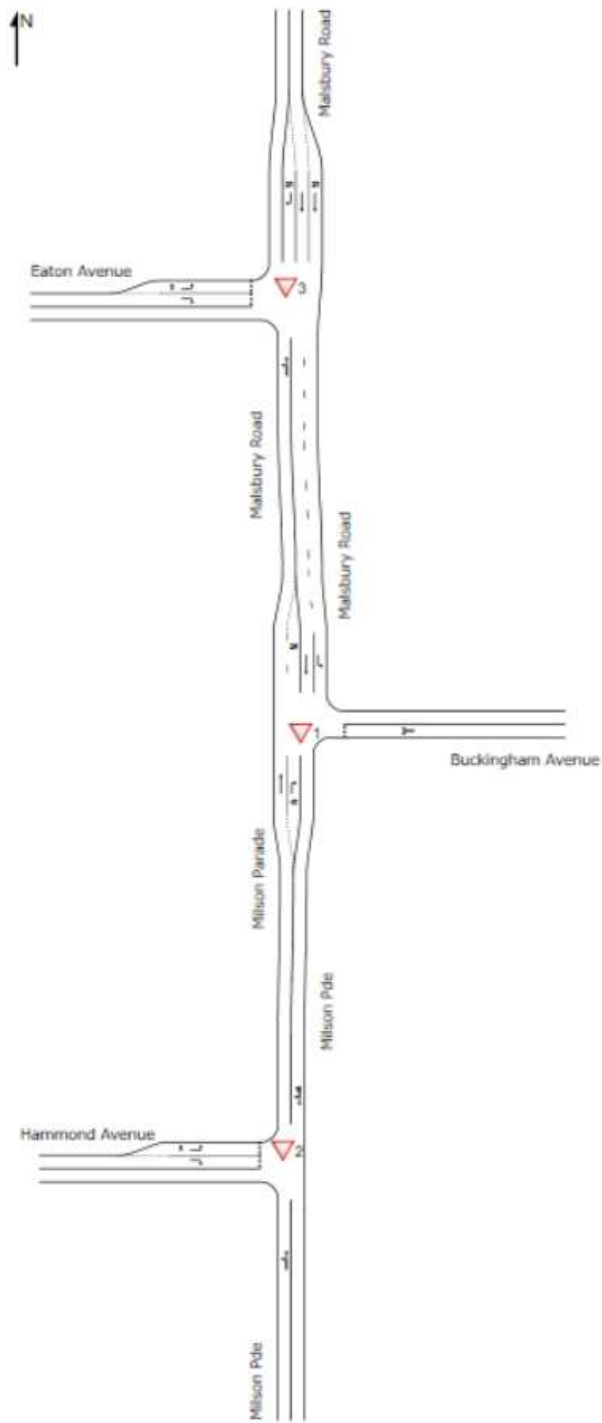
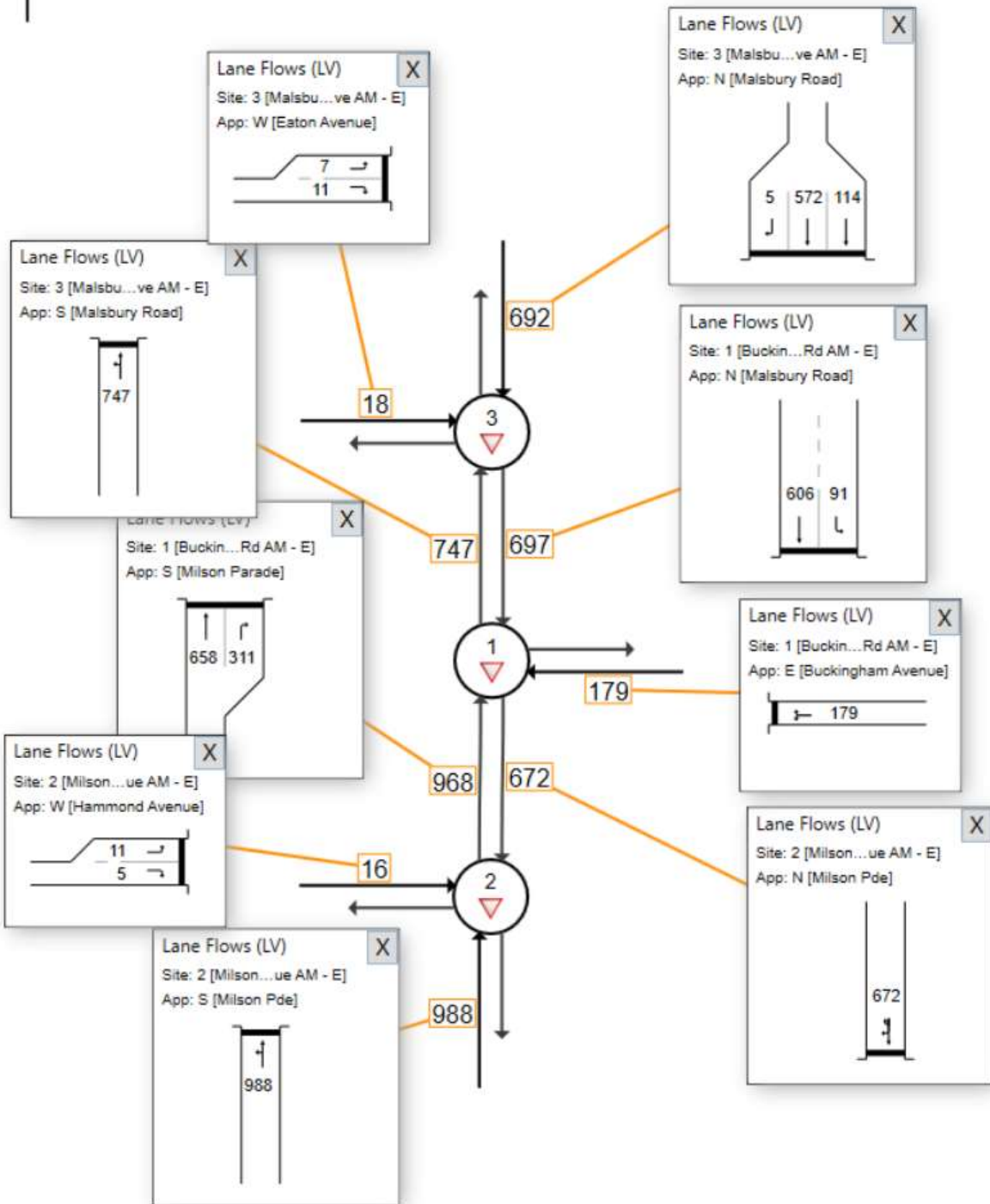


Existing Network layout:



AM volume summary (Existing):



AM Movement Summary (Existing):

MOVEMENT SUMMARY

Site: 1 [Buckingham Ave with Milson Pde and Malsbury Rd AM - E (Site Folder: General)]

Output produced by SIDRA INTERSECTION Version: 9.1.1.200

Network: N101 [AM Existing (Network Folder: General)]

New Site
Site Category: Existing Design
Give-Way (Two-Way)

Vehicle Movement Performance															
Mov ID	Turn	Mov Class	Demand Flows		Arrival Flows		Deg. Satn	Aver. Delay	Level of Service	Aver. Back Of Queue		Prop. Que	Eff. Stop Rate	Aver. No. of Cycles	Aver. Speed
			[Total	HV]	[Total	HV]				[Veh.	Dist]				
			veh/h	%	veh/h	%	v/c	sec		veh	m				
South: Milson Parade															
11	T1	All MCs	658	0.0	658	0.0	0.337	0.0	LOS A	0.0	0.0	0.00	0.00	0.00	59.8
12	R2	All MCs	311	0.0	311	0.0	0.485	12.5	LOS B	1.1	7.9	0.71	1.00	1.06	21.6
Approach			968	0.0	968	0.0	0.485	4.0	NA	1.1	7.9	0.23	0.32	0.34	35.0
East: Buckingham Avenue															
1	L2	All MCs	76	0.0	76	0.0	1.155	177.5	LOS F	8.4	58.5	1.00	2.83	6.93	1.0
3	R2	All MCs	103	0.0	103	0.0	1.155	218.0	LOS F	8.4	58.5	1.00	2.83	6.93	1.0
Approach			179	0.0	179	0.0	1.155	200.8	LOS F	8.4	58.5	1.00	2.83	6.93	1.0
North: Malsbury Road															
4	L2	All MCs	91	0.0	91	0.0	0.049	3.5	LOS A	0.0	0.0	0.00	0.54	0.00	30.2
5	T1	All MCs	606	0.0	606	0.0	0.311	0.0	LOS A	0.0	0.0	0.00	0.00	0.00	59.8
Approach			697	0.0	697	0.0	0.311	0.5	NA	0.0	0.0	0.00	0.07	0.00	49.1
All Vehicles			1844	0.0	1844	0.0	1.155	21.8	NA	8.4	58.5	0.22	0.47	0.85	11.3

MOVEMENT SUMMARY

Site: 2 [Milson Pde with Hammond Avenue AM - E (Site Folder: General)]

Output produced by SIDRA INTERSECTION Version: 9.1.1.200

Network: N101 [AM Existing (Network Folder: General)]

New Site
Site Category: (None)
Give-Way (Two-Way)

Vehicle Movement Performance															
Mov ID	Turn	Mov Class	Demand Flows		Arrival Flows		Deg. Satn	Aver. Delay	Level of Service	Aver. Back Of Queue		Prop. Que	Eff. Stop Rate	Aver. No. of Cycles	Aver. Speed
			[Total	HV]	[Total	HV]				[Veh.	Dist]				
			veh/h	%	veh/h	%	v/c	sec		veh	m				
South: Milson Pde															
10	L2	All MCs	32	0.0	32	0.0	0.508	5.7	LOS A	0.0	0.0	0.00	0.02	0.00	57.0
11	T1	All MCs	957	0.0	957	0.0	0.508	0.2	LOS A	0.0	0.0	0.00	0.02	0.00	59.3
Approach			988	0.0	988	0.0	0.508	0.4	NA	0.0	0.0	0.00	0.02	0.00	59.1
North: Milson Pde															
5	T1	All MCs	679	0.0	669	0.0	0.352	0.0	LOS A	0.1	0.4	0.02	0.02	0.02	59.6
6	R2	All MCs	2	0.0	2	0.0	0.352	36.5	LOS E	0.1	0.4	0.02	0.02	0.02	48.9
6u	U	All MCs	1	0.0	1	0.0	0.352	82.3	LOS F	0.1	0.4	0.02	0.02	0.02	57.8
Approach			682	0.0	672	0.0	0.352	0.2	NA	0.1	0.4	0.02	0.02	0.02	59.6
West: Hammond Avenue															
7	L2	All MCs	11	0.0	11	0.0	0.022	10.6	LOS B	0.0	0.2	0.71	0.82	0.71	38.9
9	R2	All MCs	5	0.0	5	0.0	0.041	29.5	LOS D	0.0	0.3	0.91	0.96	0.91	36.7
Approach			16	0.0	16	0.0	0.041	16.9	LOS C	0.0	0.3	0.77	0.87	0.77	37.7
All Vehicles			1686	0.0	1676	0.0	0.508	0.5	NA	0.1	0.4	0.01	0.03	0.01	58.9

MOVEMENT SUMMARY

Site: 3 [Malsbury Rd with Eaton Ave AM - E (Site Folder: General)]

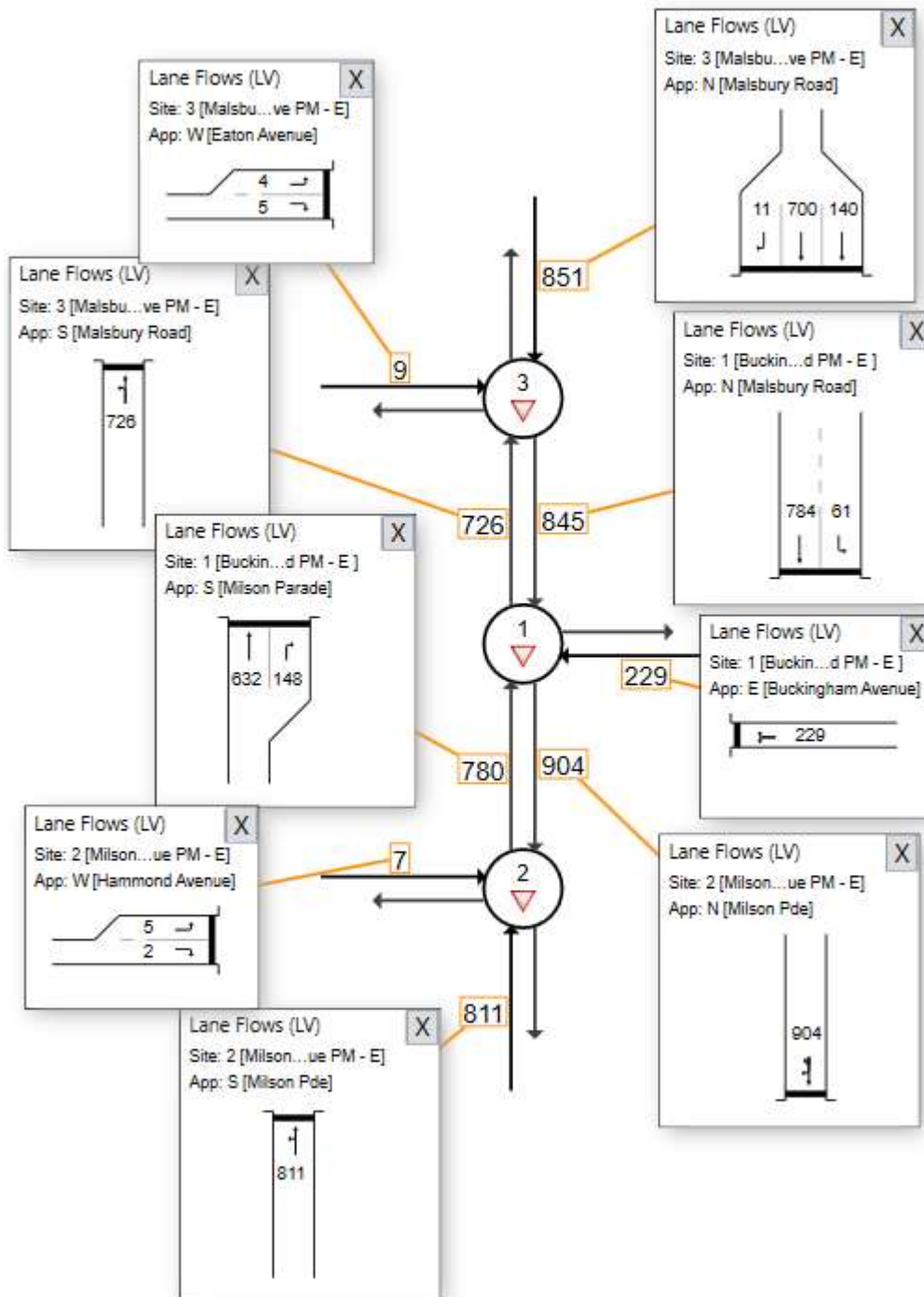
Output produced by SIDRA INTERSECTION Version: 9.1.1.200

Network: N101 [AM Existing (Network Folder: General)]

New Site
Site Category: (None)
Give-Way (Two-Way)

Vehicle Movement Performance															
Mov ID	Turn	Mov Class	Demand Flows		Arrival Flows		Deg. Satn	Aver. Delay	Level of Service	Aver. Back Of Queue		Prop. Que	Eff. Stop Rate	Aver. No. of Cycles	Aver. Speed
			[Total	HV]	[Total	HV]				[Veh.	Dist]				
			veh/h	%	veh/h	%	v/c	sec		veh	m				
South: Malsbury Road															
10	L2	All MCs	21	0.0	21	0.0	0.384	3.5	LOS A	0.0	0.0	0.00	0.02	0.00	55.2
11	T1	All MCs	740	0.0	727	0.0	0.384	0.0	LOS A	0.0	0.0	0.00	0.02	0.00	59.6
Approach			761	0.0	747	0.0	0.384	0.1	NA	0.0	0.0	0.00	0.02	0.00	59.4
North: Malsbury Road															
5	T1	All MCs	686	0.0	686	0.0	0.293	0.1	LOS A	0.0	0.0	0.00	0.00	0.00	59.9
6	R2	All MCs	5	0.0	5	0.0	0.007	9.0	LOS A	0.0	0.1	0.59	0.67	0.59	46.9
Approach			692	0.0	692	0.0	0.293	0.1	NA	0.0	0.1	0.00	0.01	0.00	59.6
West: Eaton Avenue															
7	L2	All MCs	7	0.0	7	0.0	0.014	9.1	LOS A	0.0	0.1	0.59	0.72	0.59	46.4
9	R2	All MCs	11	0.0	11	0.0	0.105	39.8	LOS E	0.1	0.9	0.92	0.96	0.92	24.0
Approach			18	0.0	18	0.0	0.105	27.1	LOS D	0.1	0.9	0.78	0.86	0.78	33.4
All Vehicles			1471	0.0	1457	0.0	0.384	0.5	NA	0.1	0.9	0.01	0.02	0.01	58.8

PM volume summary (Existing):



PM Movement Summary (Existing):

MOVEMENT SUMMARY

Site: 1 [Buckingham Ave with Milson Pde and Malsbury Rd PM - E (Site Folder: General)]

Output produced by SIDRA INTERSECTION Version: 9.1.1.200

Network: N101 [PM Existing (Network Folder: General)]

New Site
Site Category: Proposed Design 1
Give-Way (Two-Way)

Vehicle Movement Performance															
Mov ID	Turn	Mov Class	Demand Flows [Total HV]		Arrival Flows [Total HV]		Deg. Satn	Aver. Delay	Level of Service	Aver. Back Of Queue [Veh. Dist]		Prop. Que	Eff. Stop Rate	Aver. No. of Cycles	Aver. Speed
			veh/h	%	veh/h	%				w/c	sec				
South: Milson Parade															
11	T1	All MCs	632	0.0	632	0.0	0.324	0.0	LOS A	0.0	0.0	0.00	0.00	0.00	59.8
12	R2	All MCs	148	0.0	148	0.0	0.300	13.0	LOS B	0.5	3.5	0.73	0.93	0.87	21.8
Approach			780	0.0	780	0.0	0.324	2.5	NA	0.5	3.5	0.14	0.18	0.17	41.1
East: Buckingham Avenue															
1	L2	All MCs	128	0.0	128	0.0	1.069	108.9	LOS F	6.9	48.4	1.00	2.59	6.29	1.9
3	R2	All MCs	101	0.0	101	0.0	1.069	137.3	LOS F	6.9	48.4	1.00	2.59	6.29	1.9
Approach			229	0.0	229	0.0	1.069	121.4	LOS F	6.9	48.4	1.00	2.59	6.29	1.9
North: Malsbury Road															
4	L2	All MCs	61	0.0	61	0.0	0.033	3.5	LOS A	0.0	0.0	0.00	0.54	0.00	31.2
5	T1	All MCs	784	0.0	784	0.0	0.402	0.0	LOS A	0.0	0.0	0.00	0.00	0.00	59.7
Approach			845	0.0	845	0.0	0.402	0.3	NA	0.0	0.0	0.00	0.04	0.00	52.9
All Vehicles			1855	0.0	1855	0.0	1.069	16.2	NA	6.9	48.4	0.18	0.41	0.85	13.3

MOVEMENT SUMMARY

Site: 2 [Milson Pde with Hammond Avenue PM - E (Site Folder: General)]

Output produced by SIDRA INTERSECTION Version: 9.1.1.200

Network: N101 [PM Existing (Network Folder: General)]

New Site
Site Category: (None)
Give-Way (Two-Way)

Vehicle Movement Performance															
Mov ID	Turn	Mov Class	Demand Flows [Total HV]		Arrival Flows [Total HV]		Deg. Satn	Aver. Delay	Level of Service	Aver. Back Of Queue [Veh. Dist]		Prop. Que	Eff. Stop Rate	Aver. No. of Cycles	Aver. Speed
			veh/h	%	veh/h	%				w/c	sec				
South: Milson Pde															
10	L2	All MCs	37	0.0	37	0.0	0.417	5.7	LOS A	0.0	0.0	0.00	0.03	0.00	57.0
11	T1	All MCs	774	0.0	774	0.0	0.417	0.1	LOS A	0.0	0.0	0.00	0.03	0.00	59.2
Approach			811	0.0	811	0.0	0.417	0.4	NA	0.0	0.0	0.00	0.03	0.00	59.0
North: Milson Pde															
5	T1	All MCs	903	0.0	895	0.0	0.475	0.1	LOS A	0.1	1.0	0.03	0.03	0.04	59.4
6	R2	All MCs	8	0.0	8	0.0	0.475	24.8	LOS C	0.1	1.0	0.03	0.03	0.04	48.7
6u	U	All MCs	1	0.0	1	0.0	0.475	48.5	LOS E	0.1	1.0	0.03	0.03	0.04	56.5
Approach			913	0.0	904	0.0	0.475	0.4	NA	0.1	1.0	0.03	0.03	0.04	59.2
West: Hammond Avenue															
7	L2	All MCs	5	0.0	5	0.0	0.008	8.3	LOS A	0.0	0.1	0.59	0.67	0.59	40.9
9	R2	All MCs	2	0.0	2	0.0	0.017	29.7	LOS D	0.0	0.1	0.91	0.96	0.91	36.6
Approach			7	0.0	7	0.0	0.017	14.4	LOS B	0.0	0.1	0.68	0.75	0.68	38.9
All Vehicles			1731	0.0	1722	0.0	0.475	0.5	NA	0.1	1.0	0.02	0.03	0.03	59.0

MOVEMENT SUMMARY

Site: 3 [Malsbury Rd with Eaton Ave PM - E (Site Folder: General)]

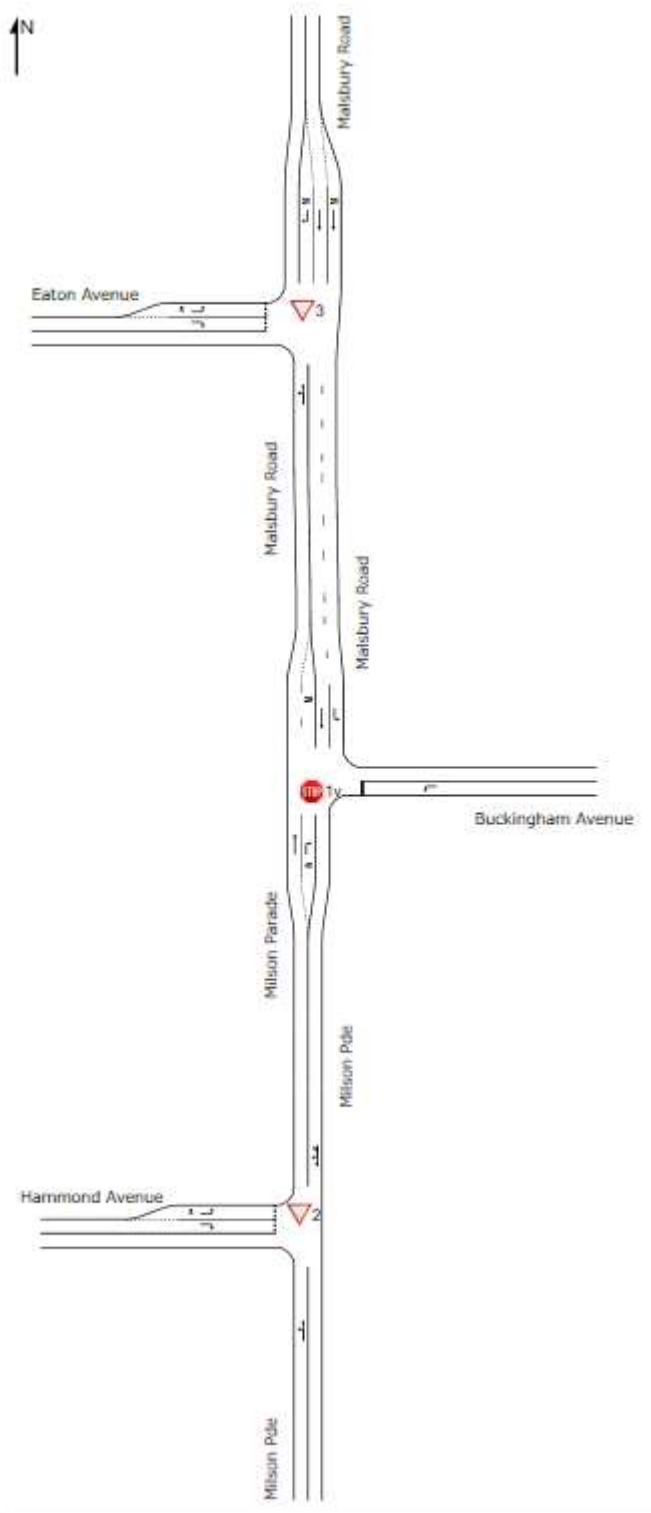
Output produced by SIDRA INTERSECTION Version: 9.1.1.200

Network: N101 [PM Existing (Network Folder: General)]

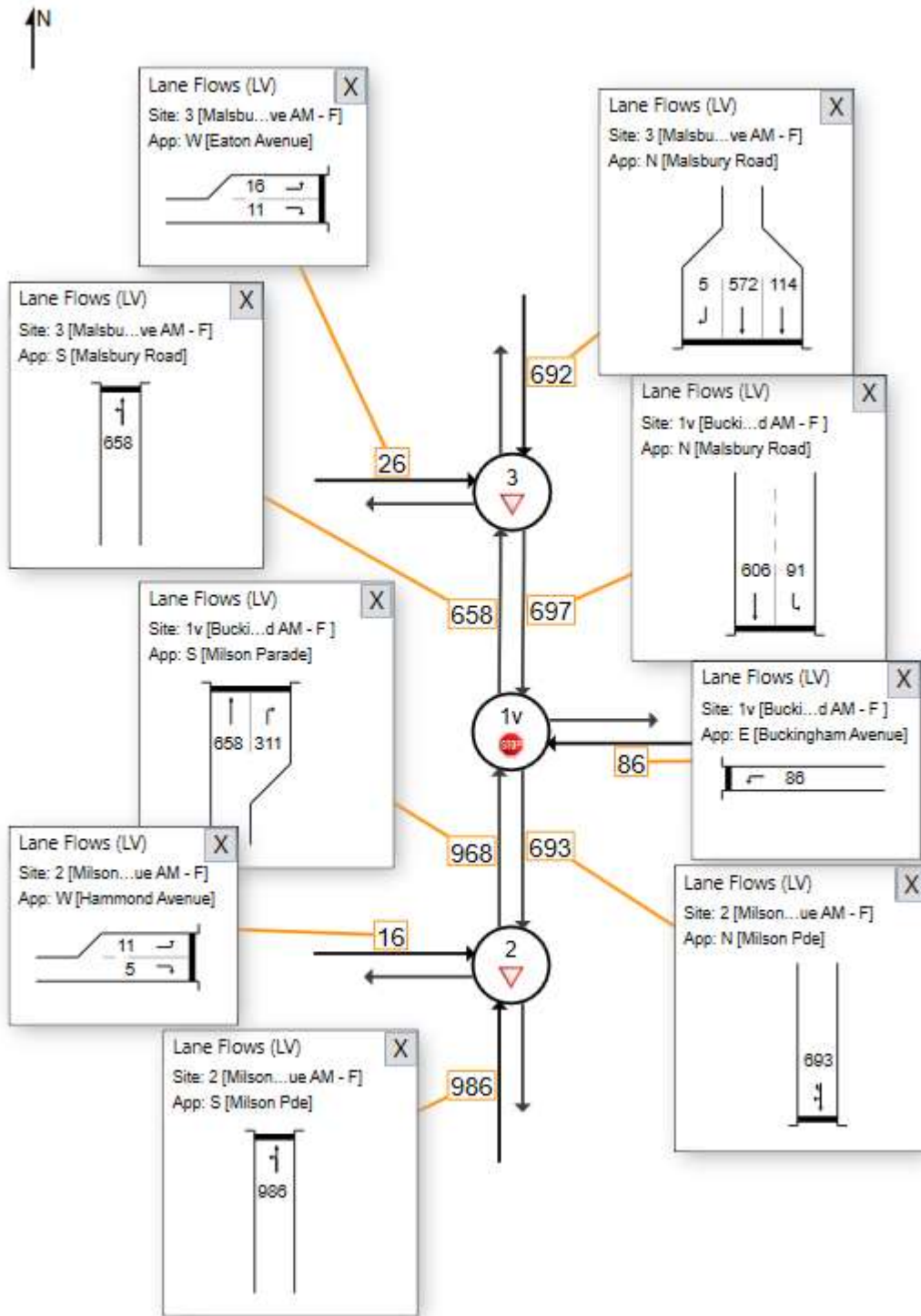
New Site
Site Category: (None)
Give-Way (Two-Way)

Vehicle Movement Performance															
Mov ID	Turn	Mov Class	Demand Flows [Total HV]		Arrival Flows [Total HV]		Deg. Satn	Aver. Delay	Level of Service	Aver. Back Of Queue [Veh. Dist]		Prop. Que	Eff. Stop Rate	Aver. No. of Cycles	Aver. Speed
			veh/h	%	veh/h	%				w/c	sec				
South: Malsbury Road															
10	L2	All MCs	21	0.0	21	0.0	0.373	3.5	LOS A	0.0	0.0	0.00	0.02	0.00	55.2
11	T1	All MCs	712	0.0	705	0.0	0.373	0.0	LOS A	0.0	0.0	0.00	0.02	0.00	59.6
Approach			733	0.0	726	0.0	0.373	0.1	NA	0.0	0.0	0.00	0.02	0.00	59.4
North: Malsbury Road															
5	T1	All MCs	840	0.0	840	0.0	0.359	0.1	LOS A	0.0	0.0	0.00	0.00	0.00	59.8
6	R2	All MCs	11	0.0	11	0.0	0.013	8.8	LOS A	0.0	0.1	0.59	0.70	0.59	47.0
Approach			851	0.0	851	0.0	0.359	0.2	NA	0.0	0.1	0.01	0.01	0.01	59.4
West: Eaton Avenue															
7	L2	All MCs	4	0.0	4	0.0	0.007	8.8	LOS A	0.0	0.1	0.58	0.68	0.58	46.5
9	R2	All MCs	5	0.0	5	0.0	0.068	49.2	LOS E	0.1	0.5	0.93	0.97	0.93	21.4
Approach			9	0.0	9	0.0	0.068	31.2	LOS D	0.1	0.5	0.78	0.84	0.78	32.0
All Vehicles			1593	0.0	1586	0.0	0.373	0.3	NA	0.1	0.5	0.01	0.02	0.01	59.0

Proposed Network layout:



AM volume Summary (Future):



AM Movement Summary (Future):

MOVEMENT SUMMARY

Site: 1v [Buckingham Ave with Milson Pde and Malsbury Rd AM - F (Site Folder: General)]

Output produced by SIDRA INTERSECTION Version: 9.1.1.200

Network: N101 [AM Future (Network Folder: General)]

New Site
Site Category: Future Conditions 1
Stop (Two-Way)

Vehicle Movement Performance															
Mov ID	Turn	Mov Class	Demand Flows		Arrival Flows		Deg. Satn	Aver. Delay	Level of Service	Aver. Back Of Queue		Prop. Que	Eff. Stop Rate	Aver. No. of Cycles	Aver. Speed
			[Total	HV]	[Total	HV]				[Veh.	Dist]				
			veh/h	%	veh/h	%	v/c	sec		veh	m				
South: Milson Parade															
11	T1	All MCs	658	0.0	658	0.0	0.337	0.0	LOS A	0.0	0.0	0.00	0.00	0.00	59.8
12	R2	All MCs	311	0.0	311	0.0	0.485	12.5	LOS B	1.1	7.9	0.71	1.00	1.06	21.6
Approach			968	0.0	968	0.0	0.485	4.0	NA	1.1	7.9	0.23	0.32	0.34	35.0
East: Buckingham Avenue															
1	L2	All MCs	86	0.0	86	0.0	0.158	10.9	LOS B	0.2	1.5	0.59	1.00	0.59	14.6
Approach			86	0.0	86	0.0	0.158	10.9	LOS B	0.2	1.5	0.59	1.00	0.59	14.6
North: Malsbury Road															
4	L2	All MCs	91	0.0	91	0.0	0.049	3.5	LOS A	0.0	0.0	0.00	0.54	0.00	30.2
5	T1	All MCs	606	0.0	606	0.0	0.311	0.0	LOS A	0.0	0.0	0.00	0.00	0.00	59.8
Approach			697	0.0	697	0.0	0.311	0.5	NA	0.0	0.0	0.00	0.07	0.00	49.1
All Vehicles			1752	0.0	1752	0.0	0.485	2.9	NA	1.1	7.9	0.15	0.25	0.22	36.1

MOVEMENT SUMMARY

Site: 2 [Milson Pde with Hammond Avenue AM - F (Site Folder: General)]

Output produced by SIDRA INTERSECTION Version: 9.1.1.200

Network: N101 [AM Future (Network Folder: General)]

New Site
Site Category: (None)
Give-Way (Two-Way)

Vehicle Movement Performance															
Mov ID	Turn	Mov Class	Demand Flows		Arrival Flows		Deg. Satn	Aver. Delay	Level of Service	Aver. Back Of Queue		Prop. Que	Eff. Stop Rate	Aver. No. of Cycles	Aver. Speed
			[Total	HV]	[Total	HV]				[Veh.	Dist]				
			veh/h	%	veh/h	%	v/c	sec		veh	m				
South: Milson Pde															
10	L2	All MCs	32	0.0	32	0.0	0.507	5.7	LOS A	0.0	0.0	0.00	0.02	0.00	57.0
11	T1	All MCs	955	0.0	955	0.0	0.507	0.2	LOS A	0.0	0.0	0.00	0.02	0.00	59.3
Approach			986	0.0	986	0.0	0.507	0.4	NA	0.0	0.0	0.00	0.02	0.00	59.1
North: Milson Pde															
5	T1	All MCs	679	0.0	679	0.0	0.385	0.0	LOS A	0.2	1.5	0.07	0.08	0.07	58.4
6	R2	All MCs	11	0.0	11	0.0	0.385	40.0	LOS E	0.2	1.5	0.07	0.08	0.07	48.0
6u	U	All MCs	3	0.0	3	0.0	0.385	90.5	LOS F	0.2	1.5	0.07	0.08	0.07	51.5
Approach			693	0.0	693	0.0	0.385	1.0	NA	0.2	1.5	0.07	0.08	0.07	58.2
West: Hammond Avenue															
7	L2	All MCs	11	0.0	11	0.0	0.022	10.6	LOS B	0.0	0.2	0.71	0.82	0.71	38.9
9	R2	All MCs	5	0.0	5	0.0	0.043	30.2	LOS D	0.0	0.3	0.91	0.96	0.91	36.4
Approach			16	0.0	16	0.0	0.043	17.1	LOS C	0.0	0.3	0.77	0.87	0.77	37.6
All Vehicles			1695	0.0	1695	0.0	0.507	0.8	NA	0.2	1.5	0.04	0.05	0.04	58.3

MOVEMENT SUMMARY

Site: 3 [Malsbury Rd with Eaton Ave AM - F (Site Folder: General)]

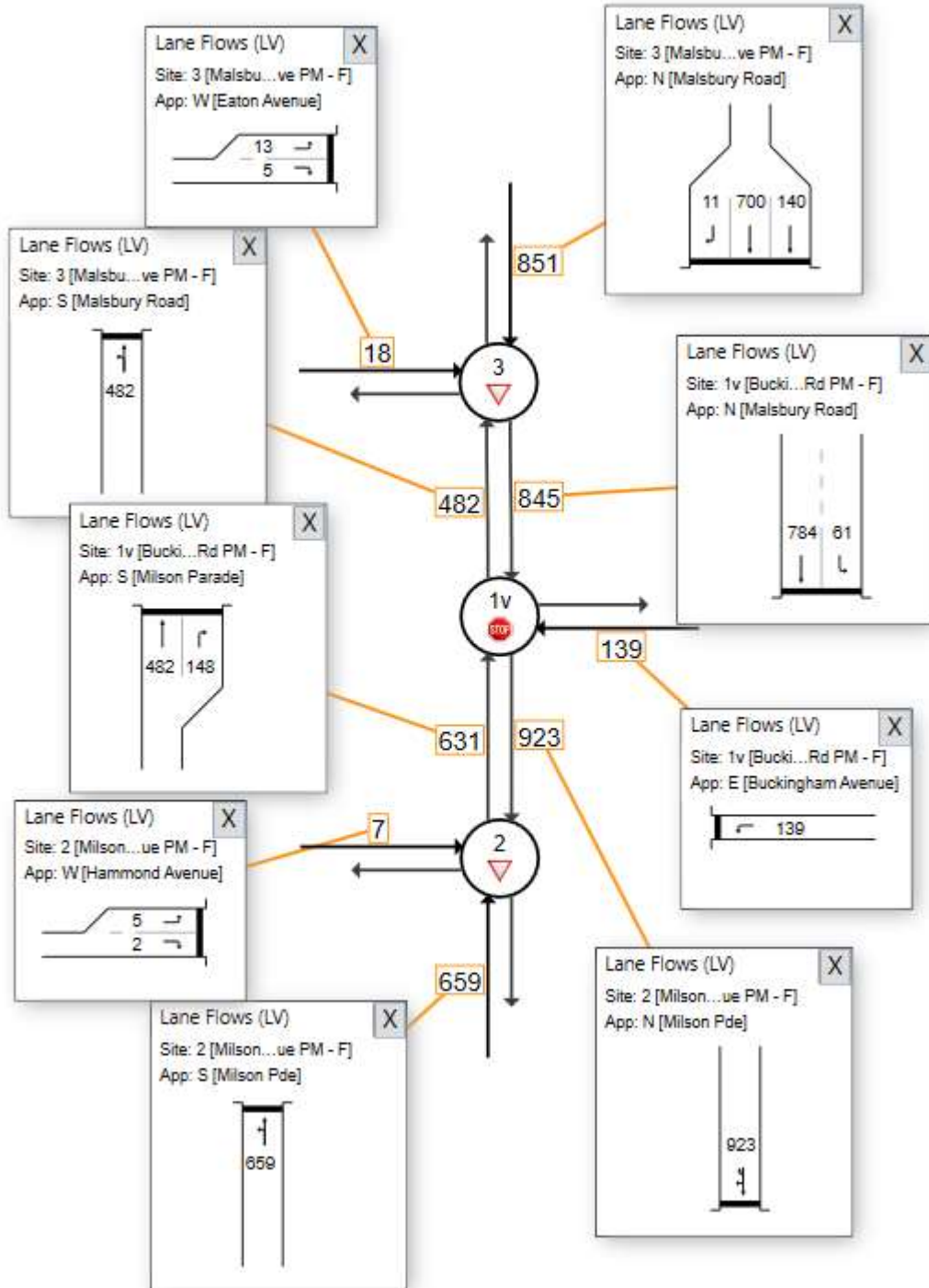
Output produced by SIDRA INTERSECTION Version: 9.1.1.200

Network: N101 [AM Future (Network Folder: General)]

New Site
Site Category: (None)
Give-Way (Two-Way)

Vehicle Movement Performance															
Mov ID	Turn	Mov Class	Demand Flows		Arrival Flows		Deg. Satn	Aver. Delay	Level of Service	Aver. Back Of Queue		Prop. Que	Eff. Stop Rate	Aver. No. of Cycles	Aver. Speed
			[Total	HV]	[Total	HV]				[Veh.	Dist]				
			veh/h	%	veh/h	%	v/c	sec		veh	m				
South: Malsbury Road															
10	L2	All MCs	21	0.0	21	0.0	0.338	3.5	LOS A	0.0	0.0	0.00	0.02	0.00	55.3
11	T1	All MCs	637	0.0	637	0.0	0.338	0.0	LOS A	0.0	0.0	0.00	0.02	0.00	59.6
Approach			658	0.0	658	0.0	0.338	0.1	NA	0.0	0.0	0.00	0.02	0.00	59.4
North: Malsbury Road															
5	T1	All MCs	686	0.0	686	0.0	0.293	0.1	LOS A	0.0	0.0	0.00	0.00	0.00	59.9
6	R2	All MCs	5	0.0	5	0.0	0.006	8.3	LOS A	0.0	0.1	0.56	0.64	0.56	47.3
Approach			692	0.0	692	0.0	0.293	0.1	NA	0.0	0.1	0.00	0.00	0.00	59.6
West: Eaton Avenue															
7	L2	All MCs	16	0.0	16	0.0	0.025	8.2	LOS A	0.0	0.2	0.53	0.70	0.53	46.9
9	R2	All MCs	11	0.0	11	0.0	0.083	32.3	LOS D	0.1	0.7	0.89	0.95	0.89	26.6
Approach			26	0.0	26	0.0	0.083	17.8	LOS C	0.1	0.7	0.68	0.80	0.68	39.4
All Vehicles			1376	0.0	1376	0.0	0.338	0.5	NA	0.1	0.7	0.02	0.03	0.02	58.7

PM volume Summary (Future):



PM Movement Summary (Future):

MOVEMENT SUMMARY

Site: 1v [Buckingham Ave with Milson Pde and Malsbury Rd PM - F (Site Folder: General)]

Output produced by SIDRA INTERSECTION Version: 9.1.1.200

Network: N101 [PM Future (Network Folder: General)]

New Site
Site Category: Future Conditions 1
Stop (Two-Way)

Vehicle Movement Performance															
Mov ID	Turn	Mov Class	Demand Flows [Total HV]		Arrival Flows [Total HV]		Deg. Satn	Aver. Delay	Level of Service	Aver. Back Of Queue Dist		Prop. Que	Eff. Stop Rate	Aver. No. of Cycles	Aver. Speed
			veh/h	%	veh/h	%				v/c	sec				
South: Milson Parade															
11	T1	All MCs	482	0.0	482	0.0	0.247	0.0	LOS A	0.0	0.0	0.00	0.00	0.00	59.9
12	R2	All MCs	148	0.0	148	0.0	0.300	13.0	LOS B	0.5	3.5	0.73	0.93	0.87	21.8
Approach			631	0.0	631	0.0	0.300	3.1	NA	0.5	3.5	0.17	0.22	0.20	38.6
East: Buckingham Avenue															
1	L2	All MCs	139	0.0	139	0.0	0.356	16.6	LOS C	0.6	4.0	0.76	1.07	0.97	12.0
Approach			139	0.0	139	0.0	0.356	16.6	LOS C	0.6	4.0	0.76	1.07	0.97	12.0
North: Malsbury Road															
4	L2	All MCs	61	0.0	61	0.0	0.033	3.5	LOS A	0.0	0.0	0.00	0.54	0.00	31.2
5	T1	All MCs	784	0.0	784	0.0	0.402	0.0	LOS A	0.0	0.0	0.00	0.00	0.00	59.7
Approach			845	0.0	845	0.0	0.402	0.3	NA	0.0	0.0	0.00	0.04	0.00	52.9
All Vehicles			1615	0.0	1615	0.0	0.402	2.8	NA	0.6	4.0	0.13	0.20	0.16	36.3

MOVEMENT SUMMARY

Site: 2 [Milson Pde with Hammond Avenue PM - F (Site Folder: General)]

Output produced by SIDRA INTERSECTION Version: 9.1.1.200

Network: N101 [PM Future (Network Folder: General)]

New Site
Site Category: (None)
Give-Way (Two-Way)

Vehicle Movement Performance															
Mov ID	Turn	Mov Class	Demand Flows [Total HV]		Arrival Flows [Total HV]		Deg. Satn	Aver. Delay	Level of Service	Aver. Back Of Queue Dist		Prop. Que	Eff. Stop Rate	Aver. No. of Cycles	Aver. Speed
			veh/h	%	veh/h	%				v/c	sec				
South: Milson Pde															
10	L2	All MCs	37	0.0	37	0.0	0.339	5.6	LOS A	0.0	0.0	0.00	0.03	0.00	57.0
11	T1	All MCs	622	0.0	622	0.0	0.339	0.1	LOS A	0.0	0.0	0.00	0.03	0.00	59.2
Approach			659	0.0	659	0.0	0.339	0.4	NA	0.0	0.0	0.00	0.03	0.00	59.0
North: Milson Pde															
5	T1	All MCs	903	0.0	903	0.0	0.490	0.1	LOS A	0.2	1.7	0.05	0.06	0.07	59.1
6	R2	All MCs	17	0.0	17	0.0	0.490	18.2	LOS C	0.2	1.7	0.05	0.06	0.07	48.5
6u	U	All MCs	3	0.0	3	0.0	0.490	32.3	LOS D	0.2	1.7	0.05	0.06	0.07	54.8
Approach			923	0.0	923	0.0	0.490	0.6	NA	0.2	1.7	0.05	0.06	0.07	58.8
West: Hammond Avenue															
7	L2	All MCs	5	0.0	5	0.0	0.006	7.1	LOS A	0.0	0.1	0.52	0.61	0.52	42.0
9	R2	All MCs	2	0.0	2	0.0	0.014	24.6	LOS C	0.0	0.1	0.88	0.95	0.88	38.5
Approach			7	0.0	7	0.0	0.014	12.1	LOS B	0.0	0.1	0.62	0.71	0.62	40.4
All Vehicles			1589	0.0	1589	0.0	0.490	0.6	NA	0.2	1.7	0.03	0.05	0.04	58.7

MOVEMENT SUMMARY

Site: 3 [Malsbury Rd with Eaton Ave PM - F (Site Folder: General)]

Output produced by SIDRA INTERSECTION Version: 9.1.1.200

Network: N101 [PM Future (Network Folder: General)]

New Site
Site Category: (None)
Give-Way (Two-Way)

Vehicle Movement Performance															
Mov ID	Turn	Mov Class	Demand Flows [Total HV]		Arrival Flows [Total HV]		Deg. Satn	Aver. Delay	Level of Service	Aver. Back Of Queue Dist		Prop. Que	Eff. Stop Rate	Aver. No. of Cycles	Aver. Speed
			veh/h	%	veh/h	%				v/c	sec				
South: Malsbury Road															
10	L2	All MCs	21	0.0	21	0.0	0.248	3.5	LOS A	0.0	0.0	0.00	0.02	0.00	56.2
11	T1	All MCs	461	0.0	461	0.0	0.248	0.0	LOS A	0.0	0.0	0.00	0.02	0.00	59.6
Approach			482	0.0	482	0.0	0.248	0.2	NA	0.0	0.0	0.00	0.02	0.00	59.4
North: Malsbury Road															
5	T1	All MCs	840	0.0	840	0.0	0.359	0.1	LOS A	0.0	0.0	0.00	0.00	0.00	59.8
6	R2	All MCs	11	0.0	11	0.0	0.010	7.2	LOS A	0.0	0.1	0.48	0.61	0.48	47.9
Approach			851	0.0	851	0.0	0.359	0.2	NA	0.0	0.1	0.01	0.01	0.01	59.4
West: Eaton Avenue															
7	L2	All MCs	13	0.0	13	0.0	0.016	6.7	LOS A	0.0	0.1	0.45	0.61	0.45	47.8
9	R2	All MCs	5	0.0	5	0.0	0.042	31.7	LOS D	0.1	0.4	0.89	0.95	0.89	26.8
Approach			18	0.0	18	0.0	0.042	14.1	LOS B	0.1	0.4	0.58	0.71	0.58	42.1
All Vehicles			1351	0.0	1351	0.0	0.359	0.4	NA	0.1	0.4	0.01	0.02	0.01	58.9