

Darwinia biflora and Tetratheca glandulosa conservation area

KEY

- | | | |
|---|--|---|
| 1. Exercise equipment | 5. Picnic settings | 10. Potential relocated accessible bay |
| 2. 2m wide concrete pedestrian circuit path | 6. Nature play trail marker | 11. Existing informal trail through boundary vegetation |
| 3. 2m wide pedestrian circuit path with synthetic turf (to allow for runoff zone) | 7. Nature play trail with obstacle course through local heritage item listing 577 (HLEP) boundary vegetation. Additional planting proposed | 12. Berry Park bushland trail circuit (existing) |
| 4. Sandstone seating | 8. Build your own cubby frame in clearing | 13. Existing amenities building |
| | 9. Potential new accessible entry | 14. Existing edge of oval |
| | | 15. Existing fence to conservation area |

FIELD PROVISIONS
 1 x Full size adult soccer field or (1 x soccer junior field and 2 x soccer mini fields) (winter)
 1 x Cricket - junior oval synthetic pitch (summer)

PROJECT DESCRIPTION

Berry Park at Mt Colah is scheduled for renewal under Council's capital works program.

The draft landscape masterplan includes a new local scale playground, pedestrian circuit path around the oval, improved access with potential relocation of the accessible ramp off Myall Road and relocated accessible parking bay.

The new playground will feature a 3 way swingset, large climbing frame and picnic setting. The playground extends into the vegetation beyond with a nature play trail and build your own cubby opportunity in the clearing.

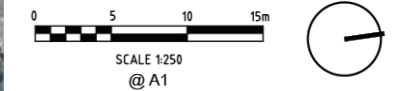
The playground will be shaded by the adjacent established canopy and new canopy tree plantings.

The masterplan proposes exercise equipment along the circuit path. It will provide opportunities for warm up and strengthening activities.

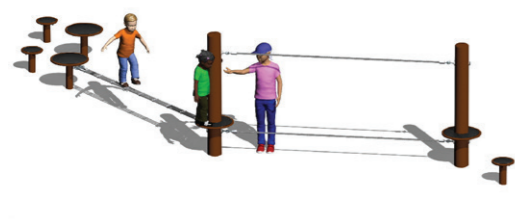
The project is to be staged subject to available funding with the playground to be delivered in stage 1.



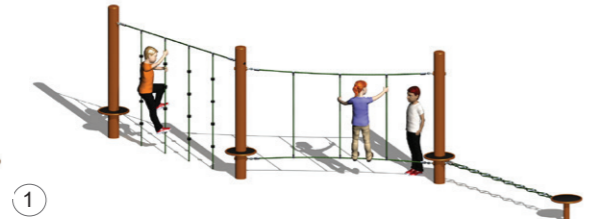
Nature play trail entry point



INDICATIVE PLAY AND FITNESS EQUIPMENT



Nature play trail obstacle course



Build your own cubby frame



Three way swing



Climbing structure



Strength exercise station



Leg strengthening exercise station



Painted totem nature trail markers



Sandstone seating edge



Nature play trail through vegetation



Woodgrain finish aluminium picnic setting



Stepping stones in play mulch



Sandstone stepping blocks



Parks, Trees and Recreation Branch

Hornsby Shire Council
296 Peats Ferry Road, Hornsby
PO Box 37, Hornsby NSW 1630

Telephone 9847 6666
8.30am - 5pm Mon-Fri

hornsby.nsw.gov.au

BERRY PARK
MYALL ROAD, MT COLAH
DRAFT LANDSCAPE MASTERPLAN
AUGUST 2024

