

ENTRY AREA

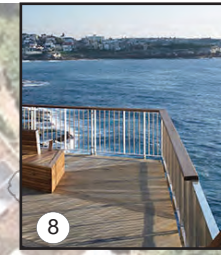


Celebrate existing sandstone entry pillars by pulling retaining wall away from them

Palisade type fence to entry

Wrought iron handrails to tie in with existing gates

BOARDWALK TO AMENITIES



Micro mesh boardwalk with galvanized steel balustrade, timber lean rail

Timber lean rail and balustrade to edge of escarpment adjoining amenities



PROJECT DESCRIPTION

Works are to be undertaken in three areas at Lisgar Gardens as part of this upgrade plan.

Firstly the entry area is to be upgraded with a new concrete path from the middle of the carpark to the entry. This path will broaden to a sandstone paved landing area for seating, signage and pram parking.

The sandstone staircase will be retained although widened at the base to reveal the sandstone pillars that mark the entry. The adjoining retaining walls will be upgraded to sandstone for longevity.

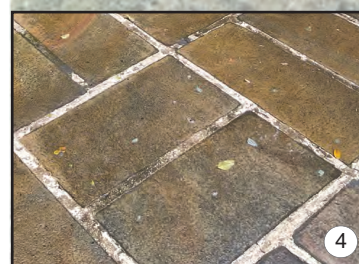
Secondly the access from the inclinator to the accessible amenities will be improved with regrading of the ramp down to the pavilion and a new path installed adjacent to the pavilion to facilitate access during events within the pavilion.

Thirdly the installation of a new amenities/information centre and a combined maintenance storage and lunch room facility to the level below.

KEY

1. New concrete path from carpark to main entry
2. Sandstone paved landing with provision for pram parking, seating and signage.
3. Widened sandstone stair with pillars revealed. New sandstone retaining walls. Fence upgraded at entry to a palisade style fence.
4. New ramp from inclinator to pavilion
5. New 1.5m wide pathway down side of pavilion to accessible amenities. Includes new sandstone retaining wall. Requires removal of one mature tree.
6. Sandstone screening planters within pavilion to match existing planters nearby pavilion.
7. New amenities on site of former lunchroom. Structure incorporates decorative screen to front of amenities doors and a 2.4m long information panel within the undercroft. Fences screen off area behind amenities.
8. Upgraded bridge and stairs to facilitate new access route to amenities.
9. New combined lunchroom and maintenance storage building.

PATH AT PAVILION

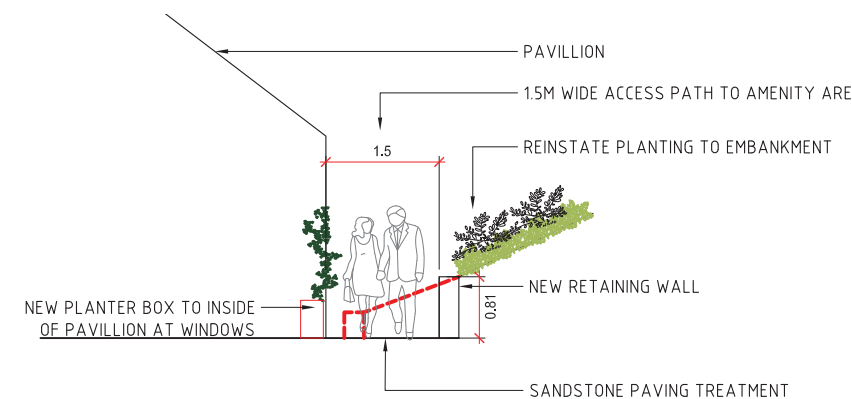


Sandstone paving to match existing pavilion pavement

AMENITIES SCREEN



Decorative screening to amenities that relates to the Camellias on site



Parks, Trees and Recreation Branch

Hornsby Shire Council  
296 Peats Ferry Road, Hornsby  
PO Box 37, Hornsby NSW 1630

Telephone 9847 6666  
8.30am - 5pm Mon-Fri

hornsby.nsw.gov.au

LISGAR GARDENS  
LISGAR ROAD, HORNSBY  
UPGRADE PLANS  
February 2022





**AMENITIES/ INFORMATION CENTRE**

A new circuit pathway will provide access to an area of the gardens that was previously roped off as a maintenance area. This new pathway departs off the main entry pathway extending across the waterfall onto a large rock escarpment. This platform area provides some of the best views across the gardens. This platform will house an information hub which features a 2.4m long signage panel that can display a large map of the gardens, historical information on the gardens and some educational information on Camellia varieties. In addition to this, the screen in front of the amenities contained within this hub will feature imagery relating to the camellias on site. Back of house areas behind the amenities will be screened off. The path will feature portions of boardwalk as well as a staircase down to the lower level. Balustrading and handrails will ensure a safe passageway across the waterfall and escarpment.

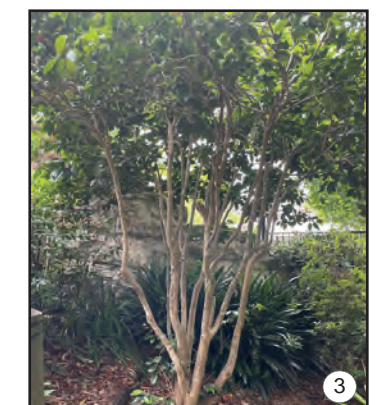
On the lower level maintenance storage and a staff lunchroom will be consolidated into the one structure. Both the amenities structure and this structure will feature a gable roof and will read as matching structures. Privacy is maintained for the lunch room with a screening element at the doorway.



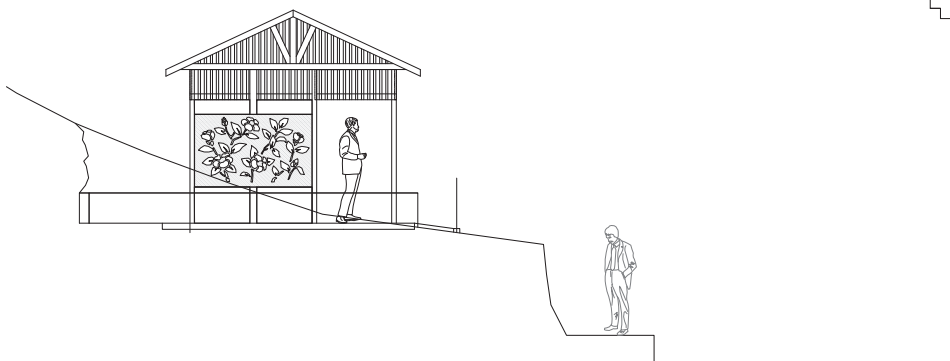
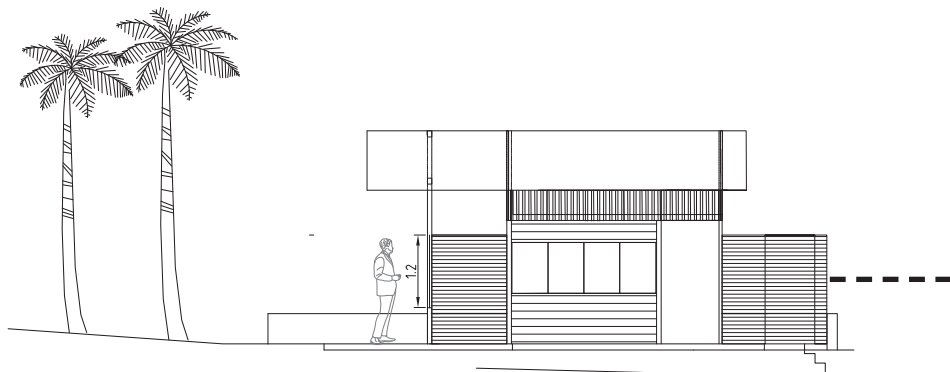
**ENTRY**

A widened street level landing provides a comfortable rest point and waiting area and improves the street presence of the gardens with opportunities for place signage.

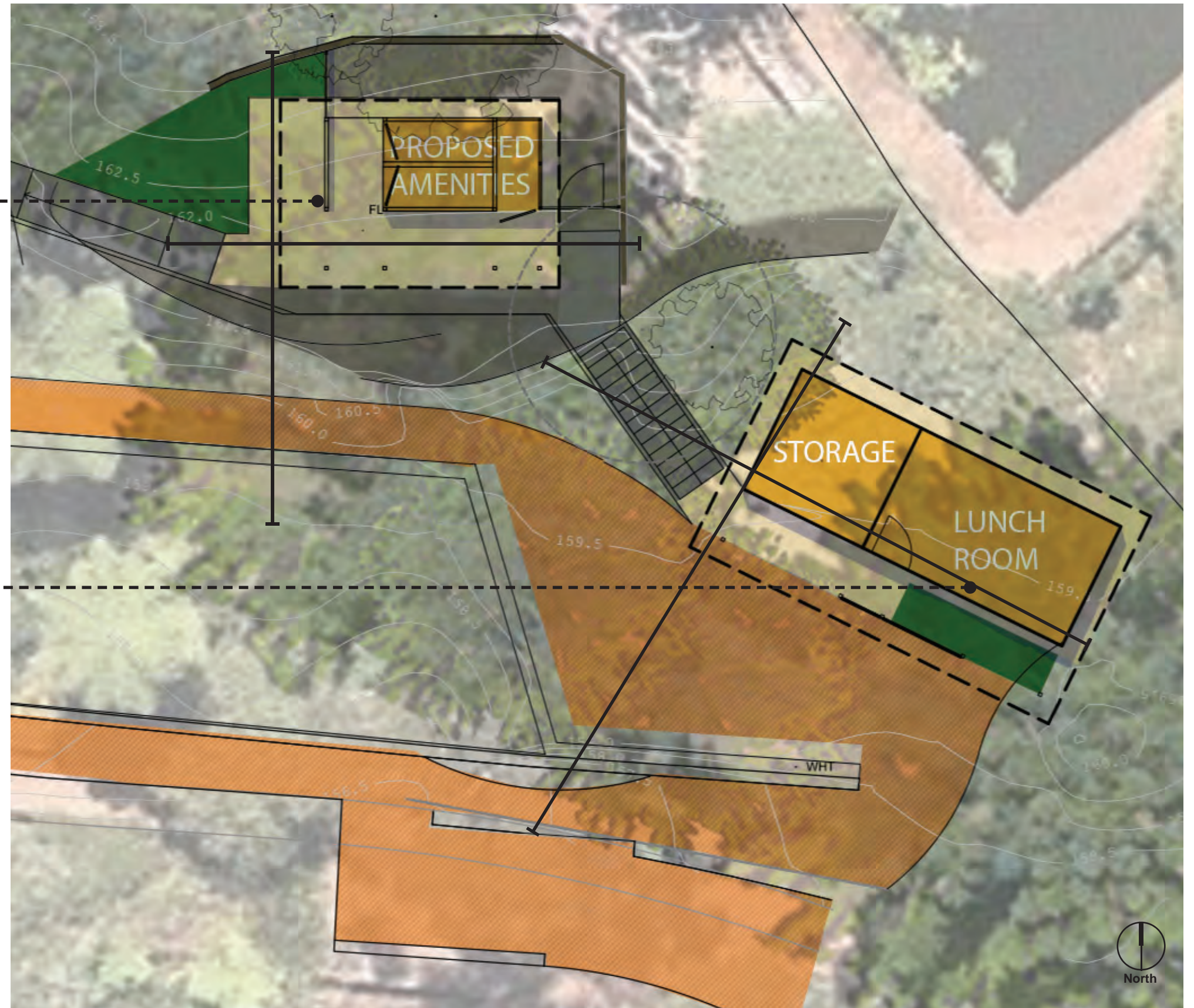
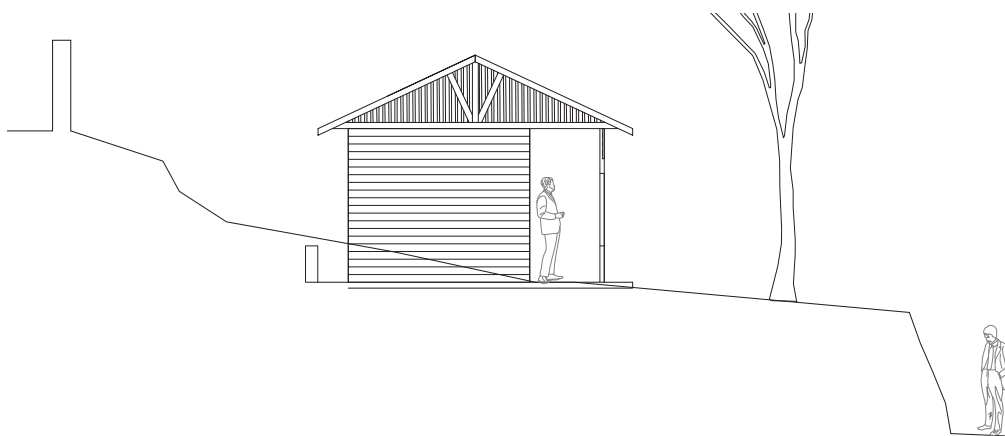
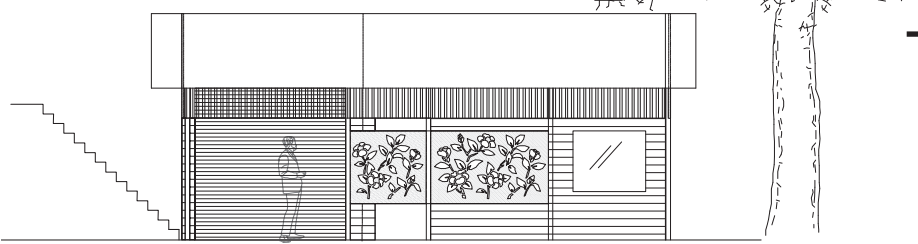
Two significant camellias will be retained at the entry and surrounding vegetation will be lowered so that these specimens can really shine.



AMENITIES/ INFORMATION CENTRE



MAINTENANCE STORAGE / LUNCHROOM



Parks, Trees and Recreation Branch

Hornsby Shire Council  
296 Peats Ferry Road, Hornsby  
PO Box 37, Hornsby NSW 1630

Telephone 9847 6666  
8.30am - 5pm Mon-Fri

[hornsby.nsw.gov.au](http://hornsby.nsw.gov.au)

**LISGAR GARDENS**  
LISGAR ROAD, HORNSBY  
UPGRADE PLANS  
February 2022





OPTION OPENS UP VIEWS OF ESCARPMENT



CLEAR VIEW TO AMENITIES/ LOOKOUT FROM MAIN PATH



NEW PATHWAY / LOOKOUT/ AMENITIES AND INFORMATION CENTRE TO TOP OF ESCARPMENT. VIEW FROM LOWER PATH



ALIGNMENT OF NEW STAIR TO LOWER LEVEL



MULCH ACCESS PATH TO LOWER LEVEL



ALIGNMENT OF NEW STORAGE / LUNCHROOM BUILDING

**Parks, Trees and Recreation Branch**

Hornsby Shire Council  
296 Peats Ferry Road, Hornsby  
PO Box 37, Hornsby NSW 1630

Telephone 9847 6666  
8.30am - 5pm Mon-Fri

[hornsby.nsw.gov.au](http://hornsby.nsw.gov.au)

**LISGAR GARDENS**  
LISGAR ROAD, HORNSBY  
UPGRADE PLANS  
February 2022

