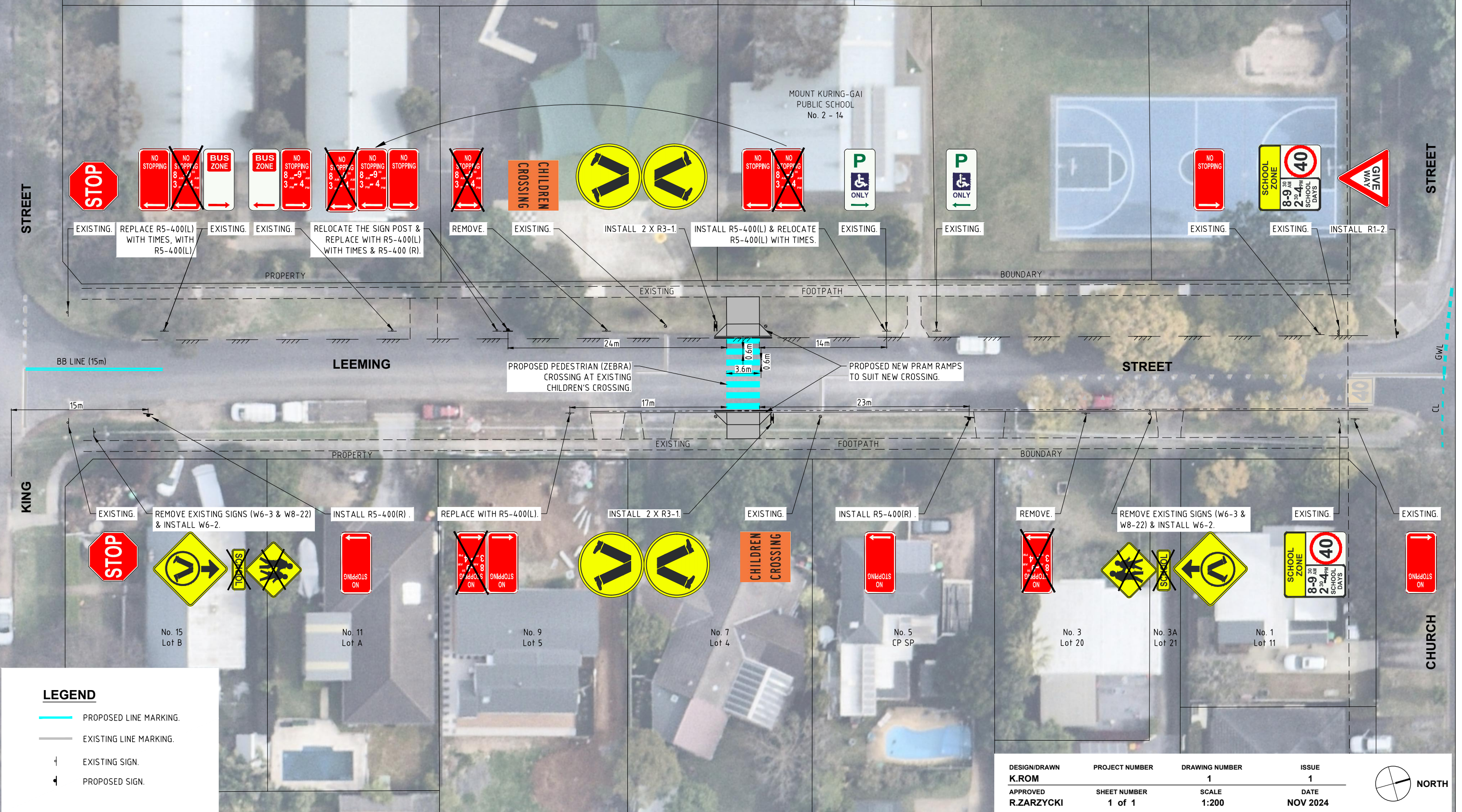


**PRELIMINARY**  
NOT FOR CONSTRUCTION  
ISSUED FOR INFORMATION ONLY

**THIS DRAWING SHALL ONLY BE REPRODUCED AND READ IN COLOUR**

EXACT LOCATION OF GIVE WAY SIGN TO BE CONFIRMED BY TRAFFIC ENGINEER BEFORE THE INSTALLATION.



**LEGEND**

- PROPOSED LINE MARKING.
- EXISTING LINE MARKING.
- EXISTING SIGN.
- PROPOSED SIGN.

DESIGN/DRAWN <b>K.ROM</b>	PROJECT NUMBER	DRAWING NUMBER <b>1</b>	ISSUE <b>1</b>
APPROVED <b>R.ZARZYCKI</b>	SHEET NUMBER <b>1 of 1</b>	SCALE <b>1:200</b>	DATE <b>NOV 2024</b>



Design and Construction Branch  
Hornsby Shire Council  
296 Peats Ferry Road, Hornsby  
PO Box 37, Hornsby NSW 1630  
  
Telephone 9847 6666  
8.30am-5pm Monday to Friday  
[hornsby.nsw.gov.au](http://hornsby.nsw.gov.au)

**LEEMING STREET, MOUNT KURING-GAI  
PROPOSED PEDESTRIAN CROSSING  
CONSULTATION PLAN - SHEET 1 OF 1  
NOVEMBER 2024**



H:\Branch - Design and Construction\PROJECTS\Leeming St\_TR\_11266\Design\ACAD\Leeming St.dwg