



EXISTING CONDITION SITE PHOTOS



Pine Street Bus Stop



Park name signage



Picnic setting



Swings with sling seats



Toddler swings



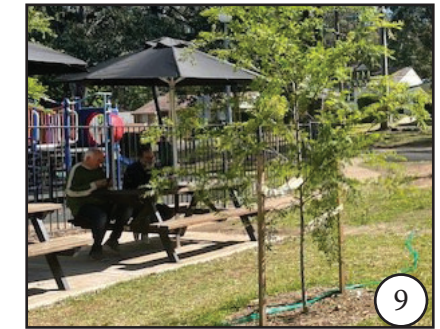
Basket ball hoop



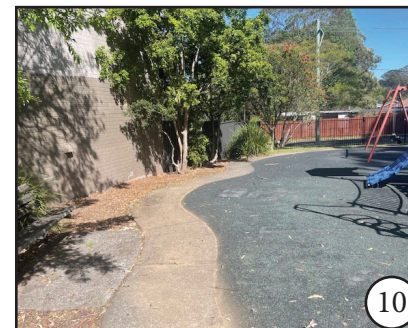
Climbing tower with slide



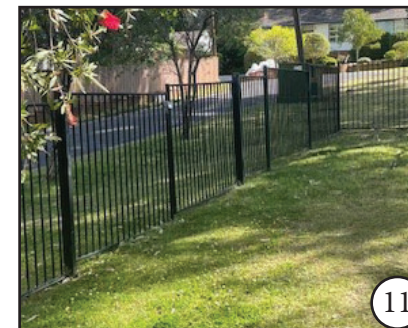
Open lawn area with mature Eucalyptus trees



Cafe seating area with new tree plantings



Trike track / cafe boundary wall



Black Tubular Playground fencing

Parks, Trees and Recreation Branch

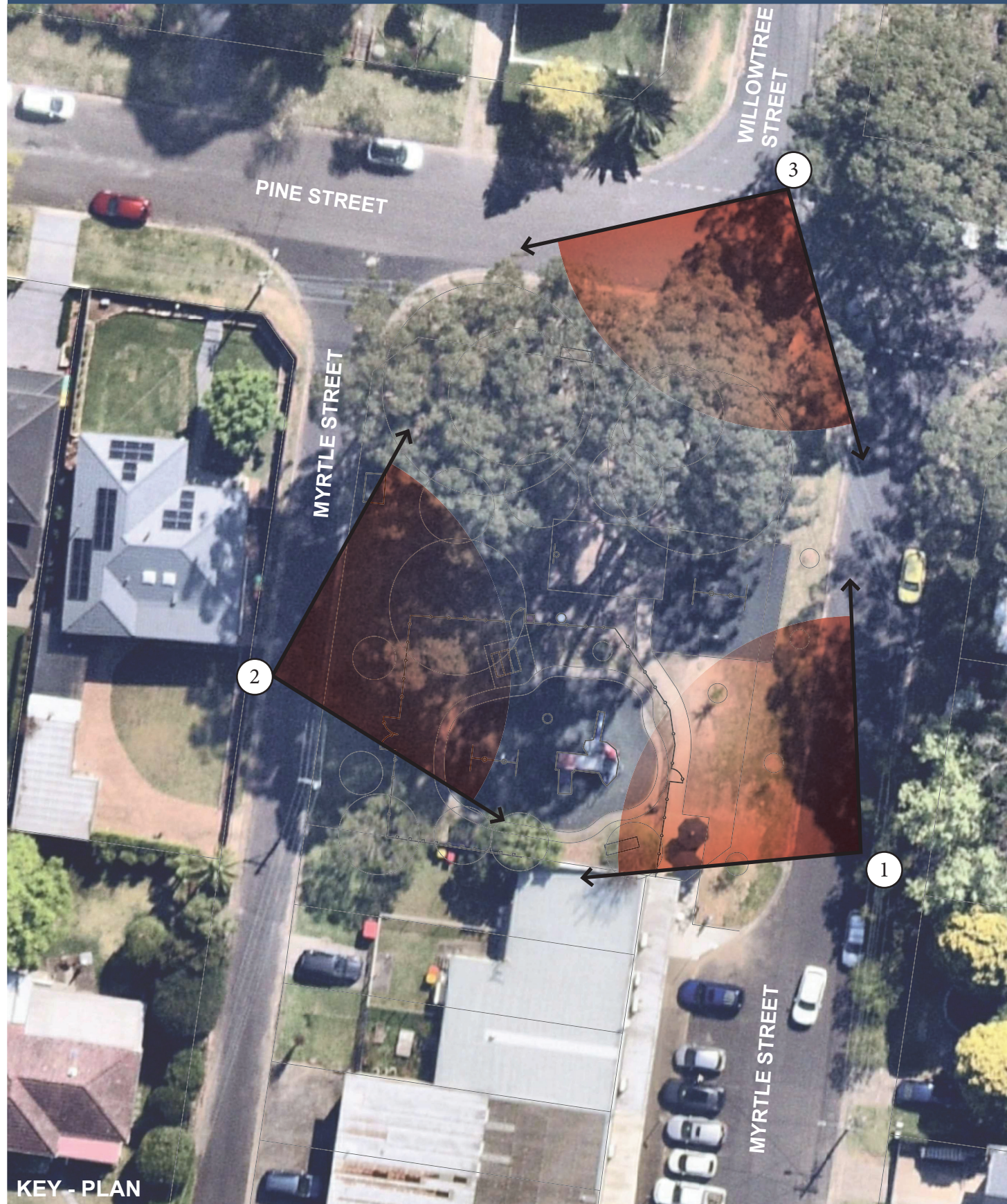
Hornsby Shire Council
296 Peats Ferry Road, Hornsby
PO Box 37, Hornsby NSW 1630

Telephone 9847 6666
8.30am - 5pm Mon-Fri

hornsby.nsw.gov.au

**CHARLES CURTIS PARK
SITE PHOTOS
PINE STREET, NORMANHURST
OCTOBER 2024**





KEY - PLAN

SITE PHOTOS - STREETVIEW



Myrtle Street frontage

1



Myrtle Street frontage

2



Pine Street frontage

3

Parks, Trees and Recreation Branch

Hornsby Shire Council
296 Peats Ferry Road, Hornsby
PO Box 37, Hornsby NSW 1630

Telephone 9847 6666
8.30am - 5pm Mon-Fri

hornsby.nsw.gov.au

CHARLES CURTIS PARK
SITE PHOTOS - STREETVIEW JUNE 2022
PINE STREET, NORMANHURST
OCTOBER 2024

