



CHARLES CURTIS PARK COMMUNITY CONSULTATION REPORT



November 2024

Parks, Trees & Recreation Branch
Hornsby Shire Council
296 Peats Ferry Road
Hornsby NSW 2077

INTRODUCTION

Council is planning renewal works at Charles Curtis Park Normanhurst. Prior to design work commencing, consultation with the community was undertaken to guide the development of a Master Plan for the park.

The resulting Master Plan provides an overall vision for the park and guidance on the types of uses and facilities that occur there. The Master Plan will be used to estimate likely costs for any upgrade works and based on available funds it is possible works may need to be staged.

LOCATION

Charles Curtis Park is a small park located at 1X Pine Street, Normanhurst. The park is 1.7km walk from Normanhurst Railway Station and is positioned adjacent a small strip of retail shops. The park is serviced by a bus route and parking is available adjacent the retail strip and in nearby local streets.

Charles Curtis Park is located in a residential area bounded by Pennant Hills Road to the north and the The Comenarra Parkway and Lane Cove National Park to the south. To the east the residential area is bordered by Pine Street bushland and Coups Creek.

The closest nearby recreational area is Rannoch Park, a small pocket park with some junior play equipment. Also close by is Brickpit Park which has recently been upgraded to include a district level playground. Valley bushland pockets are located in proximity to Begonia Road.

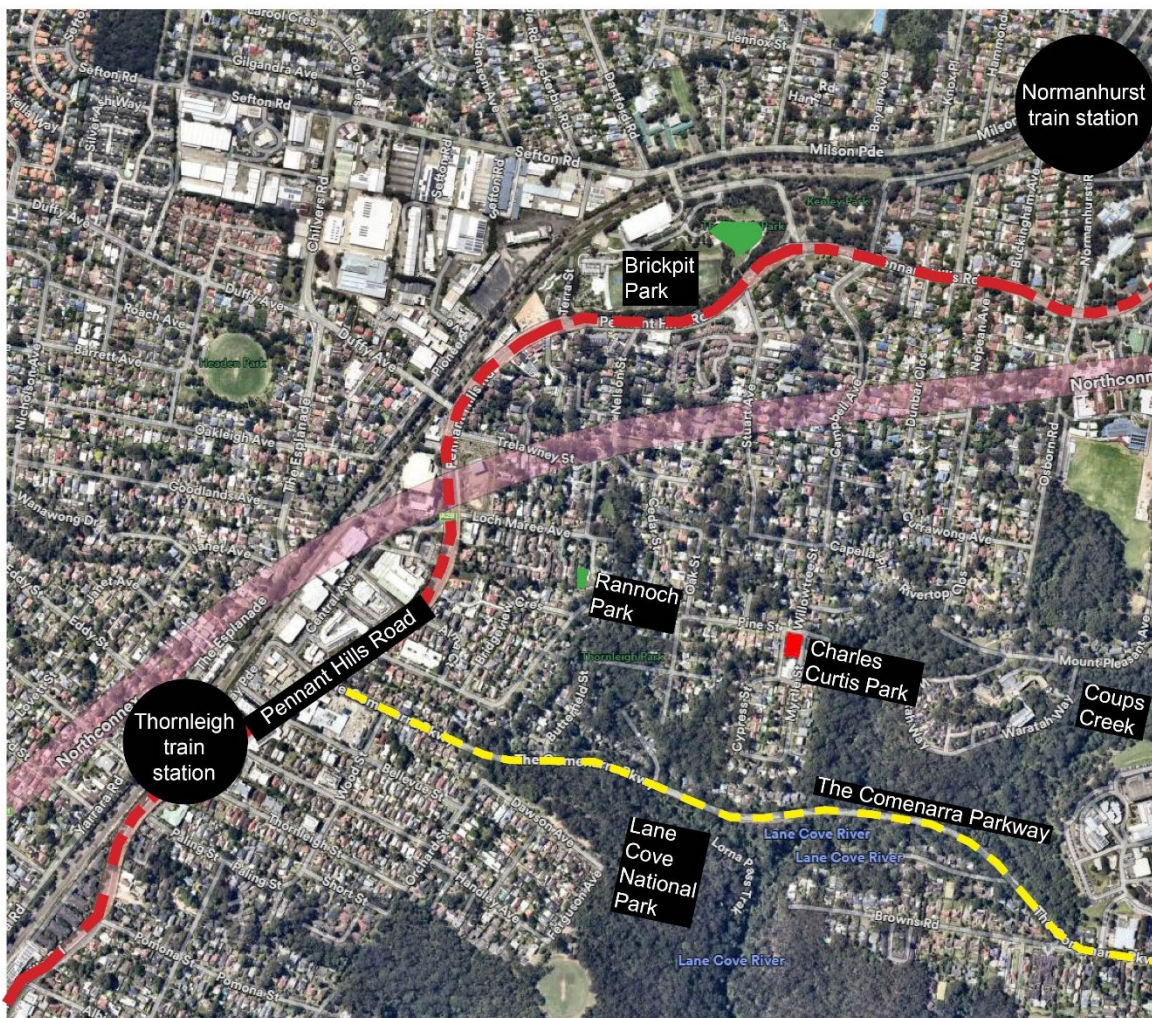


Image 1 – Charles Curtis Park locality aerial image

BACKGROUND

Charles Curtis Park is a small park with local level play provision; picnic tables; shaded grassed areas; a basketball hoop and a cafe nearby. The vegetation within the park is consistent with Blue Gum High Forest with a mix of mature Blackbutts and Sydney Blue Gums. The park is approximately 1600m². The site gently slopes from the north to the south.

Charles Curtis Park is named after a former local resident who owned land in the area in the 1800s prior to subdivision. He was philanthropic donating land for the local school.

The Hornsby Play Plan identifies the playspace as a *Local Level* playspace and lists renewal of the playspace as a low priority to renovate. The Play Plan can be found at:

<https://future.hornsby.nsw.gov.au/play-plan/>

While the plan lists the playground as a low priority project, community interest has escalated this project for delivery in the 2025/2026 financial year as the park has grown in popularity in recent years.

CONSULTATION METHODOLOGIES

Community consultation is critical to the success of the Master Plan process. Two rounds of consultation are proposed to provide the community the opportunity to contribute their ideas. The proposed project timeline is outlined below:

Community Consultation – Round 1 (October-November 2024)

The community is invited to provide input on improvements they would like to see at Charles Curtis Park to inform a draft Landscape Master Plan.

Develop draft Landscape Master Plan (December 2024 – March 2025)

A DRAFT Landscape Master Plan will be developed based on input received from the first round of consultation and an estimate of costs.

Community Consultation – Round 2 (March 2025)

The community will be invited to provide feedback on the Draft Landscape Master Plan.

Landscape Master Plan (Mid 2025)

A Landscape Master Plan will be finalised based on feedback received during Round 2 consultation and reviewed against cost estimate and available budget.

Design Development (Mid 2025)

Detail design and documentation based on Landscape Master Plan.

Construction 2025/2026

Work will be undertaken, following adoption of Council's 2025/26 Delivery and Operation Plan and allocation of a construction budget.

ROUND 1 CONSULTATION

Round 1 consultation was undertaken prior to design work commencing. The community was invited to provide suggestions for possible changes and future directions for Charles Curtis Park. This information will be used to guide development of the Draft Master Plan.

Round 1 consultation was undertaken from 16 October to 15 November 2024 and Council engaged with the community through the following channels:

- Advertisement on Council's website – Your Say Hornsby
- Online survey
- Social Media – Facebook post via councillors
- Direct mailout to adjoining neighbours
- Notices placed on site
- Notification to internal stakeholders
- 1 x drop in session with Council officers on site on Saturday 26 October 2024

Local residents also installed signage at Charles Curtis Park and Rannoch Park to notify residents of the drop in session and the Your Say Hornsby survey.



Image 2 – Site signage



Image 3 – Screenshot of Your Say Hornsby webpage

Online Survey

The community were asked to complete an online survey ranking their top five preferences for Charles Curtis Park from a selection of 11 options. The community were instructed to select their top five choices in order of preference. An opportunity was provided to add additional comments on items not included in the list.

Feedback was also sought on a number of key items including footpath location, furniture placement and the preferred extent of fencing.

A snapshot of the online survey is shown below



Image 4 – Screenshot of Your Say Hornsby webpage

Charles Curtis Park Normanhurst online survey

Rank your choices by clicking and dragging each item to the box on the right hand side, in order of preference. (If you are completing the survey on your phone, simply pick your top 5 items only, in order of preference).

Toddler play equipment (under 5yrs) ⋮	1
Early Primary play equipment (5-9yrs) ⋮	2
Late Primary play equipment (9-12yrs) ⋮	3
Basketball hoop with hardstand ⋮	4
Handball court ⋮	5
Outdoor Pingpong table ⋮	
Outdoor Exercise equipment ⋮	
Larger clear lawn area ⋮	
Artwork ⋮	
Positioning play items within existing shade areas ⋮	
Additional park benches ⋮	

Image 5 – Screenshot of online survey

The following items will be included. Please advise your preference.

Choose option 1 or 2

- 1 - Footpaths through the park
- 2 - Footpath to Pine Street verge (pram ramps will be included)

Choose option 1 or 2

- 1 - Picnic table under shelter
- 2 - Picnic table – stand alone

Choose option 1 or 2

- 1 - Fencing to playground
- 2 - Fencing to full park extent

Image 6 – Screenshot of online survey additional questions

Drop in Session

Council staff hosted a four-hour drop-in session on site on Saturday 26 October 2024. The session was attended by approximately 40 community members and two Councillors. Attendees were encouraged to complete the online survey. The session also provided residents with the opportunity to discuss their aspirations for the park with council officers.



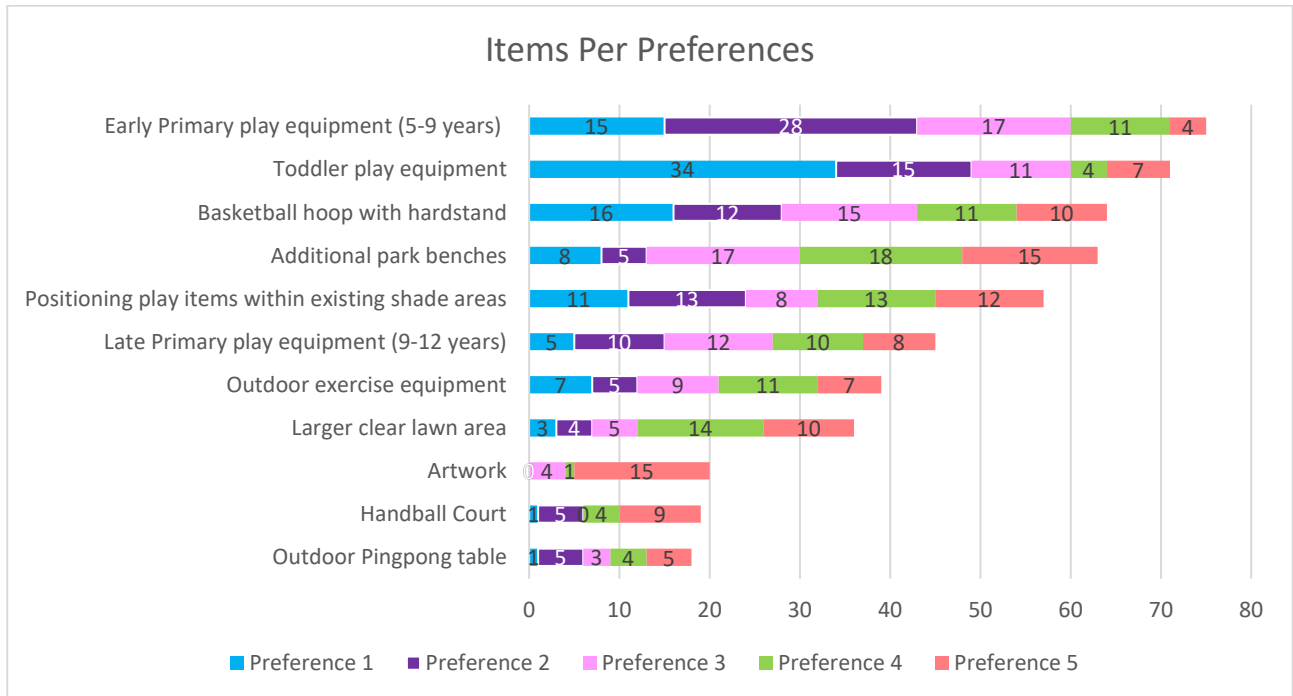
Image 7-8 – Drop-in session at Charles Curtis Park

ROUND 1 CONSULTATION RESULTS

During Round 1 consultation the community was requested to complete an online survey.

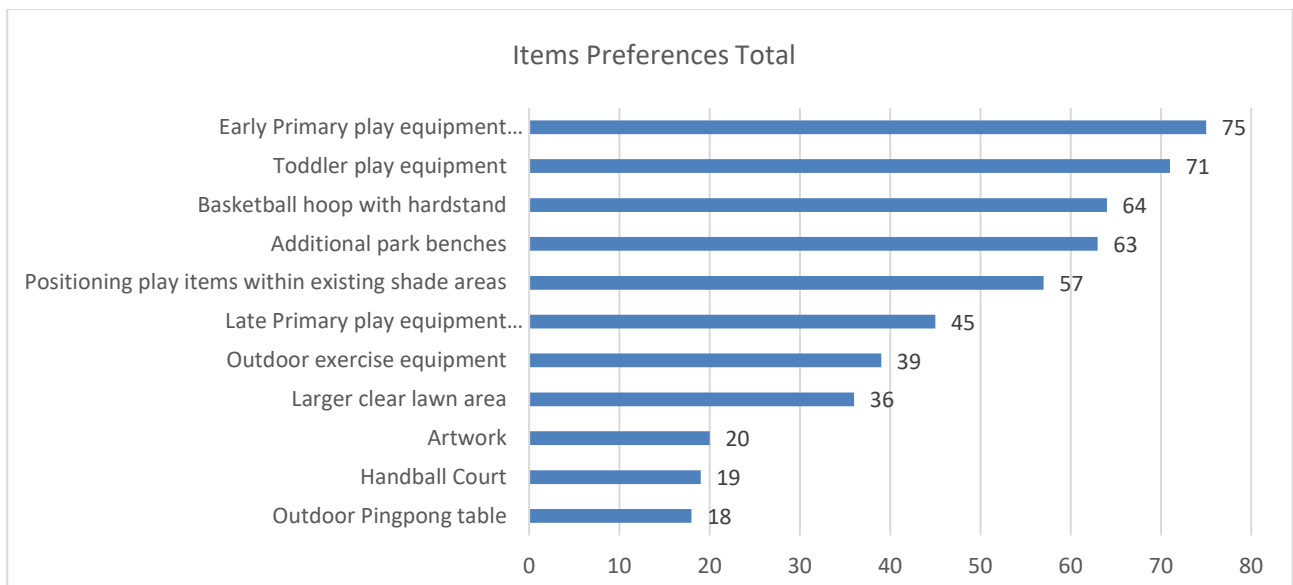
Respondents were asked to rank their top five preferences, which are shown in the bar chart below with a break down of the preference selection order

Chart 1



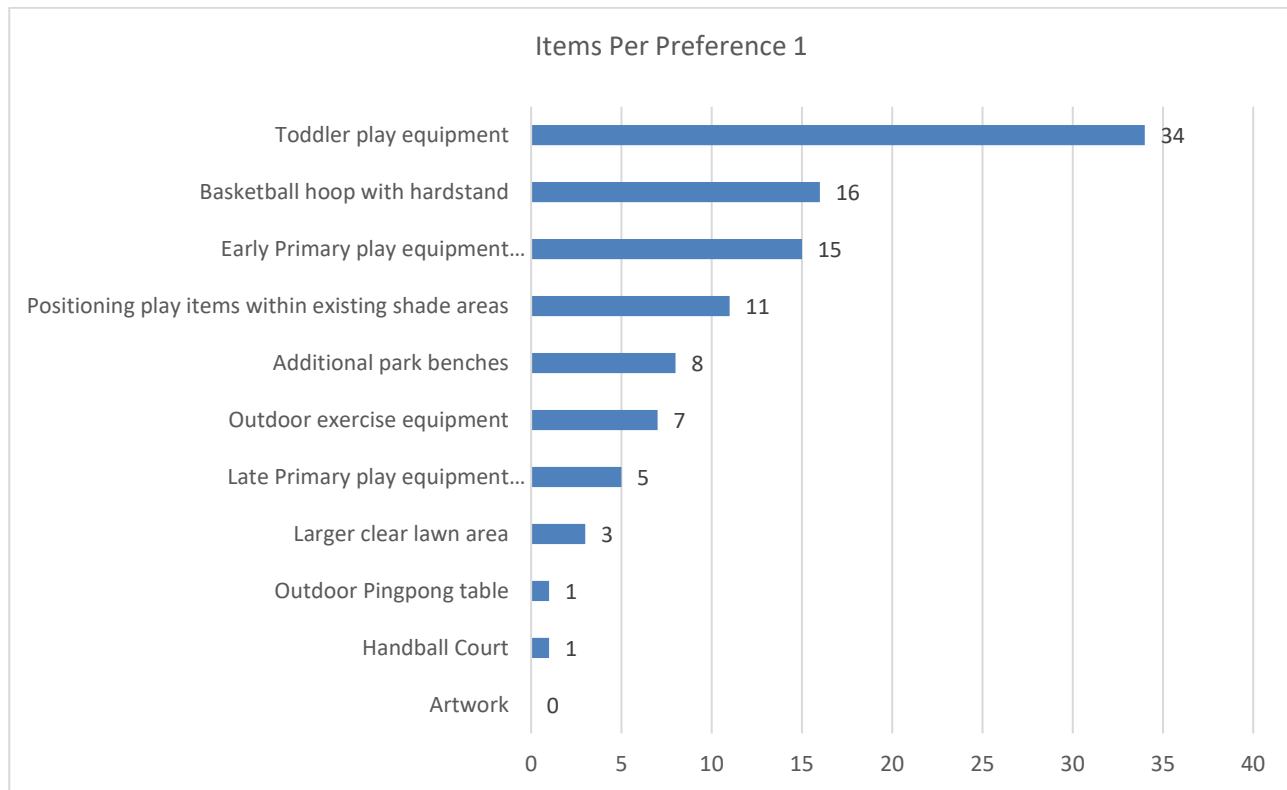
Overall votes for each item are shown below

Chart 2



The below bar chart shows the first preference only

Chart 3



The priorities were then weighted using the following method:

- First preference = 5 points
- Second preference = 4 points
- Third preference = 3 points
- Fourth preference = 2 points
- Fifth preference = 1 point

The weighting ensures top priorities are given more importance.

Chart 4 – Top Ranked Priorities from survey after weighting

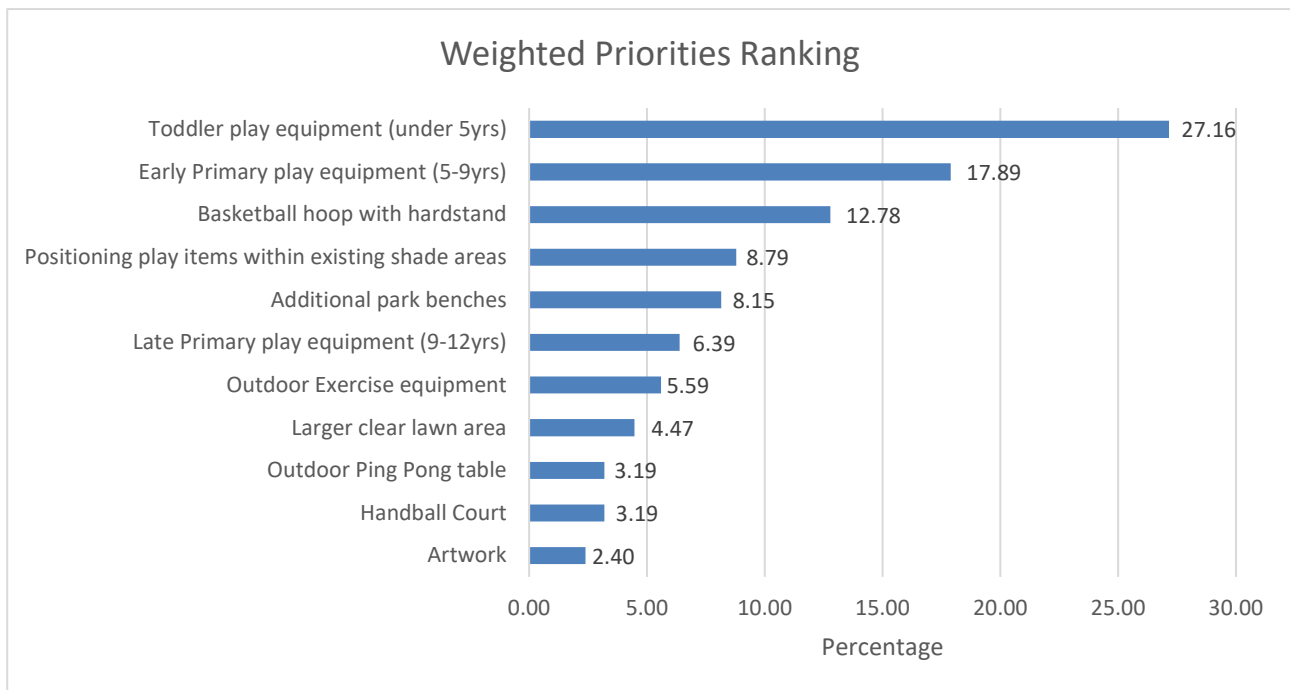
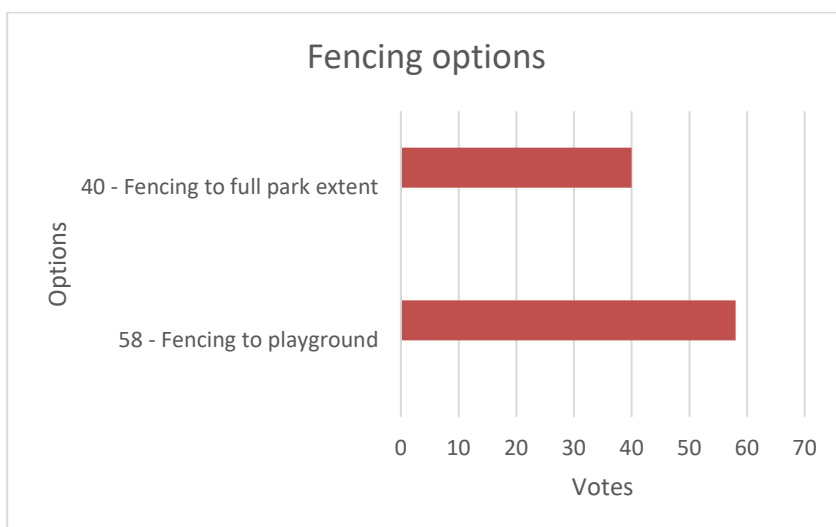
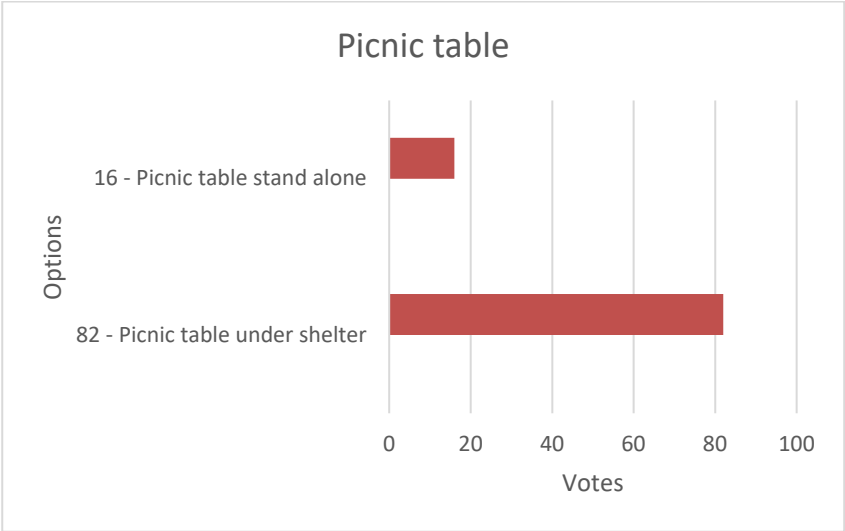
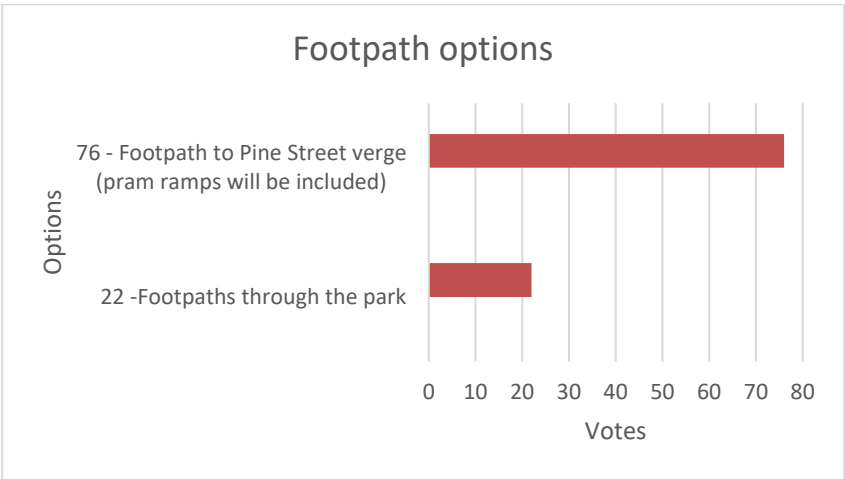


Chart 5 – Additional key item questions





Additional Comments

In addition to the survey options presented, the community offered the following other comments and suggestions for consideration. Verbal responses received from community members attending the drop in session are also included in this data. These comments are summarised in Table 1 below.

Table 1 – Additional Comments

Community Comment	No. of Responses
More Shade	26
Community meeting place	21
Cater for all ages include mixed, safe, multi-play, diverse play equipment; no tall structures, different levels preferred, nature play. Some items suggested: two different types of slides for younger & older kids; long enclosed slide accessible from a tower with a smaller slide off it for pre-schoolers; monkey bars; swing; a little boat; musical play equipment; balance equipment; round spider swing; an area to play shop; a bigger multi play unit with more variety would be great (current one is well used and too small); sand pit; small bus; flying fox; ground trampoline; more swings	18
Existing vegetation maintenance / plant more trees / tree root hazards	16
Upgrade existing basketball area / half court / fence / keep position away from Café (reduces noise conflict)	15
Sheltered picnic settings / seating	11
Replace metal park equipment	8
Improved walking paths	7
Re-turf lawn area / increase green area (replace hard surfaces)	7
Improve parking / signage / traffic - used as thoroughfare for Pennant Hills Road	6
Unisex Toilet	5
Outdoor games/activities area (i.e. table tennis, handball, soccer goals, netball)	5
Noise - consider residents; conflict with different outdoor spaces; lighting encourages night use	4
Bike / Scooter track	3
BBQs	3
Fully fence park borders - three busy roads and balls regularly roll onto the roadways	3
Equipment location: near café; mix shade and sun; under existing trees; basketball northern end of park – reduce noise conflict with Café	3
Multi purpose space: Tai Chi, Personal Trainers,	2
Artwork	2
Replace existing bin and provide a dog poo bin	2
Park lighting - consistent with federal government guidelines for the protection of wildlife from artificial light residing in Park's Sydney Blue Gums; consider neighbours; timed controlled - no later than 9.30pm	2
Natural colour scheme aesthetics	2

Community Comment	No. of Responses
Replace bubbler	1
Synthetic material preferred no bark or sand	1
Supports a dog free park	1
Consider dog walkers	1
Community vegetable garden	1
More lighting	1

OUTCOMES AND DISCUSSION – ROUND 1 CONSULTATION

The community's interest in Charles Curtis Park was evident with a combined 107 people responding to the online survey or submitting a written submission.

Provision of playground equipment for toddlers under 5yrs and early primary play equipment 5-9yrs were identified as the top two priorities. Slides and swings were identified as popular play priorities in written submissions.

Shade provision was identified as a key priority in the written submissions. It was also identified in the additional question regarding picnic furniture. With the preference for picnic seating under a shelter. The survey also ranked 'Positioning play items within existing shade areas' as the fourth most popular priority. Provision of shade will be a key driver in the positioning of play equipment and picnic shelters.

A basketball hoop with hardstand was ranked as the third most important priority. Comments received by Council indicated the need to be mindful of noise and consider the proximity of the basketball hoop to the café. Circulation conflicts, lack of fencing, surfacing requirements and height of back board were also raised by residents as issues to be resolved in the relocation of the basketball hoop.

Written feedback indicated that in addition to the playground, the park was also a popular community hub. Provision of an open turfed space with a sheltered picnic area would provide the community with a meeting place with flexibility of use. Additional seating outside of the playground would make the open space more attractive to users who might not want to engage with the playground.

The existing mature trees were identified as important features of the park but further maintenance of the trees was requested due to the risk of branches dropping if the playground were to be located closer to these trees. Since the consultation drop in session council's arborist has assessed the trees and recommended the removal of dead wood in three of the mature trees and removal of one branch overhanging the basketball hoop as a preventative measure.

The need for pedestrian pathways to the park was raised as an issue in several of the written submissions and in comments made on the drop in day. Willowtree Street and Pine Street were identified as important connections. Willowtree Street is proposed for footpath funding in the 2025/2026 financial year while Pine Street is identified as a footpath link in Council's Walking and Cycling Strategy. The additional question raised in the survey regarding footpaths identified a preference for a path along Pine Street with kerb ramps leading to the park, rather than footpaths through the park.

Traffic and parking were raised in the comments submitted and in discussions at the drop in session. Of particular concern was parking along the edge of the park on Myrtle Street, as balls may run on to this portion of the road between vehicles. It was also noted that with parked cars on both sides it is difficult to drive in between on a narrow stretch of road. Council's traffic engineer has reviewed the parking arrangements and provided the following response:

We have investigated the existing parking restrictions near the park concluding that the existing No Stopping (R) sign was not approved by the Local Traffic Committee. It is possible that it was installed informally to prevent cars parking in the remainder of the angle space (small triangular area) but it was never the intention to remove parking from Myrtle Street. Now that the kerb ramp has been installed in this area, the parking next to the ramp is illegal by regulations and the sign can be removed.

In relation to suggestions for installation of signs to regulate the parking near the park, Council does not generally install parking restrictions where existing road rules apply. It is illegal to park within 10m of an unsignalised intersection, at a bus stop, or in a way that blocks a footpath ramp. It is recommended that residents be encouraged to report illegal parking when it occurs by calling the traffic rangers on 9847 6666.

Uneven ground at the bus stop kerb was identified by a resident. This issue has been rectified by our maintenance team.

Respondents indicated a preference for fencing to be limited to around the playground rather than the full park perimeter as this meant that dog walkers and those not using the playground could still use the park without having to navigate fencing. Also, some people did not feel comfortable in a fenced playground if they did not have children with them.

Existing lighting was discussed at the drop in session. The current light fixture remains on all night. Requests were made for it to be turned off at 9.30. Council will review the lighting provision in the design development stage.

Outdoor exercise equipment was ranked as the 7th most important priority. It was not identified as a priority in the written submissions. Based on the consultation results and limited space available given other priorities outdoor exercise equipment will not be installed at Charles Curtis park.

The outdoor ping pong table and handball court were ranked as 9th and 10th most important priorities. Based on this result we will not be installing either item.

An artwork was ranked as the 11th most important priority. Only two written submissions requested artworks as an element. Based on this result we will not be installing an artwork.

Several submissions requested an amenities block and BBQ. We generally do not install this level of provision in a local park. We are also restricted by the size of the park, servicing and the existing tree cover.

DESIGN BRIEF

Based on the results of Round 1 community consultation the key priorities for Charles Curtis Park were identified and are listed below. These priorities will provide guidance on what should be considered when developing the draft Master Plan for Charles Curtis Park.

- Provision of activity opportunities and play equipment with a priority on the toddler and early primary age bracket 1-9yrs. With less provision focused on the 9-12 year age bracket.
- Create a community meeting place
- Basketball hoop with hardstand to be relocated to a more appropriate location with improved surfacing.
- Shade provision through positioning equipment closer to existing trees, and new tree plantings along with the provision of picnic table under shelter.
- Additional seating outside of the fenced playground area so that users can stay longer and make more use of the open space.
- Improved access to the park through the installation of a footpath to Willowtree Street (2025/2026 delivery plan) and a footpath as part of these works to the Pine Street frontage
- Improve open lawn area for flexibility of use
- Fencing to playground only.
- Retain, protect and manage existing trees

Council will seek feedback during round two of community consultation in March 2025 once the draft Master Plan is developed.

Appendix A

Survey results

Table 2

Item	Preference rank 1-5	Votes
Toddler play equipment	1	34
	2	15
	3	11
	4	4
	5	7
Basketball hoop with hardstand	1	16
	2	12
	3	15
	4	11
	5	10
Early Primary play equipment (5-9 years)	1	15
	2	28
	3	17
	4	11
	5	4
Positioning play items within existing shade areas	1	11
	2	13
	3	8
	4	13
	5	12
Additional park benches	1	8
	2	5
	3	17
	4	18
	5	15

Outdoor exercise equipment	1	7
	2	5
	3	9
	4	11
	5	7
Late Primary play equipment (9-12 years)	1	5
	2	10
	3	12
	4	10
	5	8
Larger clear lawn area	1	3
	2	4
	3	5
	4	14
	5	10
Outdoor Pingpong table	1	1
	2	5
	3	3
	4	4
	5	5
Handball Court	1	1
	2	5
	3	0
	4	4
	5	9
Artwork	1	0
	2	0
	3	4
	4	1
	5	15

Table 3 – Top Ranked Priorities from survey after weighting

Item	Weighted Votes	%
Toddlers play equipment (under 5yrs)	170	27.16
Early Primary play equipment (5-9yrs)	112	17.89
Basketball hoop with hardstand	80	12.78
Positioning play items within existing shade areas	55	8.79
Additional Park benches	51	8.15
Late Primary play equipment (9-12yrs)	40	6.39
Outdoor Exercise equipment	35	5.59
Larger clear lawn area	28	4.47
Outdoor Ping Pong table	20	3.19
Handball Court	20	3.19
Artwork	15	2.4
TOTAL	626	100%

Site Photos



Parks, Trees and Recreation Branch
Hornsby Shire Council
206 Peats Ferry Road, Hornsby
PO Box 37, Hornsby NSW 1630
Telephone 4647 6666
8:30am - 5pm Mon-Fri
hornsby.nsw.gov.au

CHARLES CURTIS PARK
SITE PHOTOS - STREETVIEW JUNE 2022
PINE STREET, NORMANHURST
OCTOBER 2024





EXISTING CONDITION SITE PHOTOS

 Pine Street Bus Stop	 Park name signage	 Picnic setting
 Swings with sling seats	 Toddler swings	 Basket ball hoop
 Climbing tower with slide	 Open lawn area with mature Eucalyptus trees	 Cafe seating area with new tree plantings
 Trike track / cafe boundary wall	 Black Tubular Playground fencing	

**CHARLES CURTIS PARK
SITE PHOTOS
PINE STREET, NORMANHURST
OCTOBER 2024**

**HORNSBY
SHIRE COUNCIL**

Parks, Trees and Recreation Branch
Hornsby Shire Council
260 Peats Ferry Road, Hornsby
PO Box 57, Hornsby NSW 1585
Tel: 9507 6995
8.30am - 5pm Mon-Fri
hornsby.nsw.gov.au

Site Analysis

