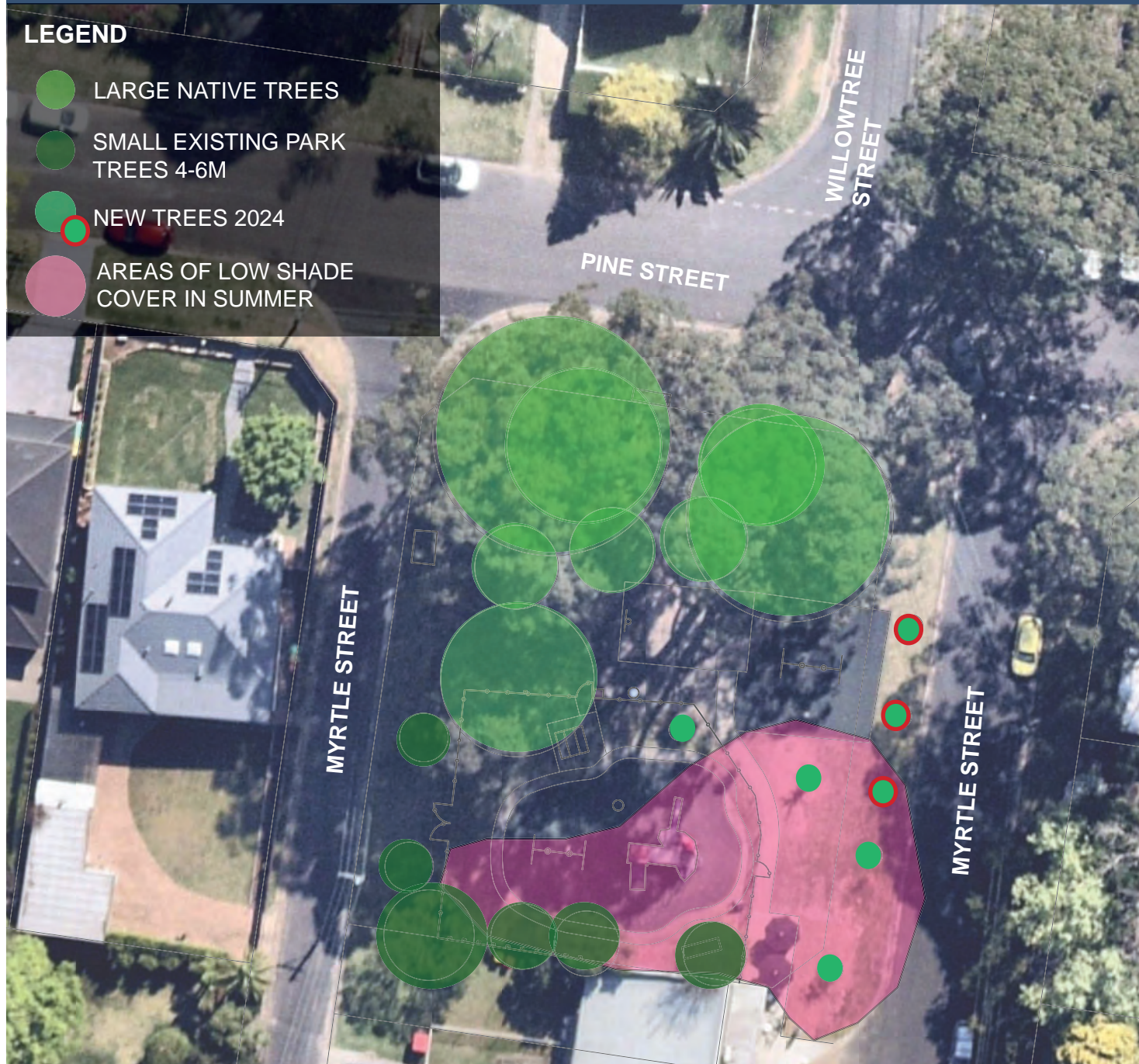


LEGEND

- LARGE NATIVE TREES
- SMALL EXISTING PARK TREES 4-6M
- NEW TREES 2024
- AREAS OF LOW SHADE COVER IN SUMMER



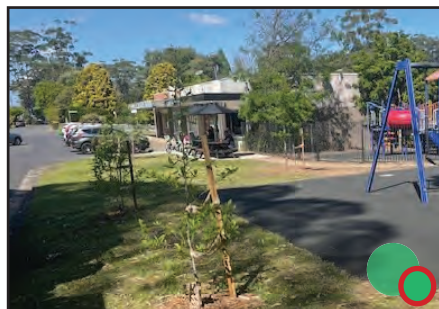
EXISTING TREES, SHADE AND CANOPY COVER



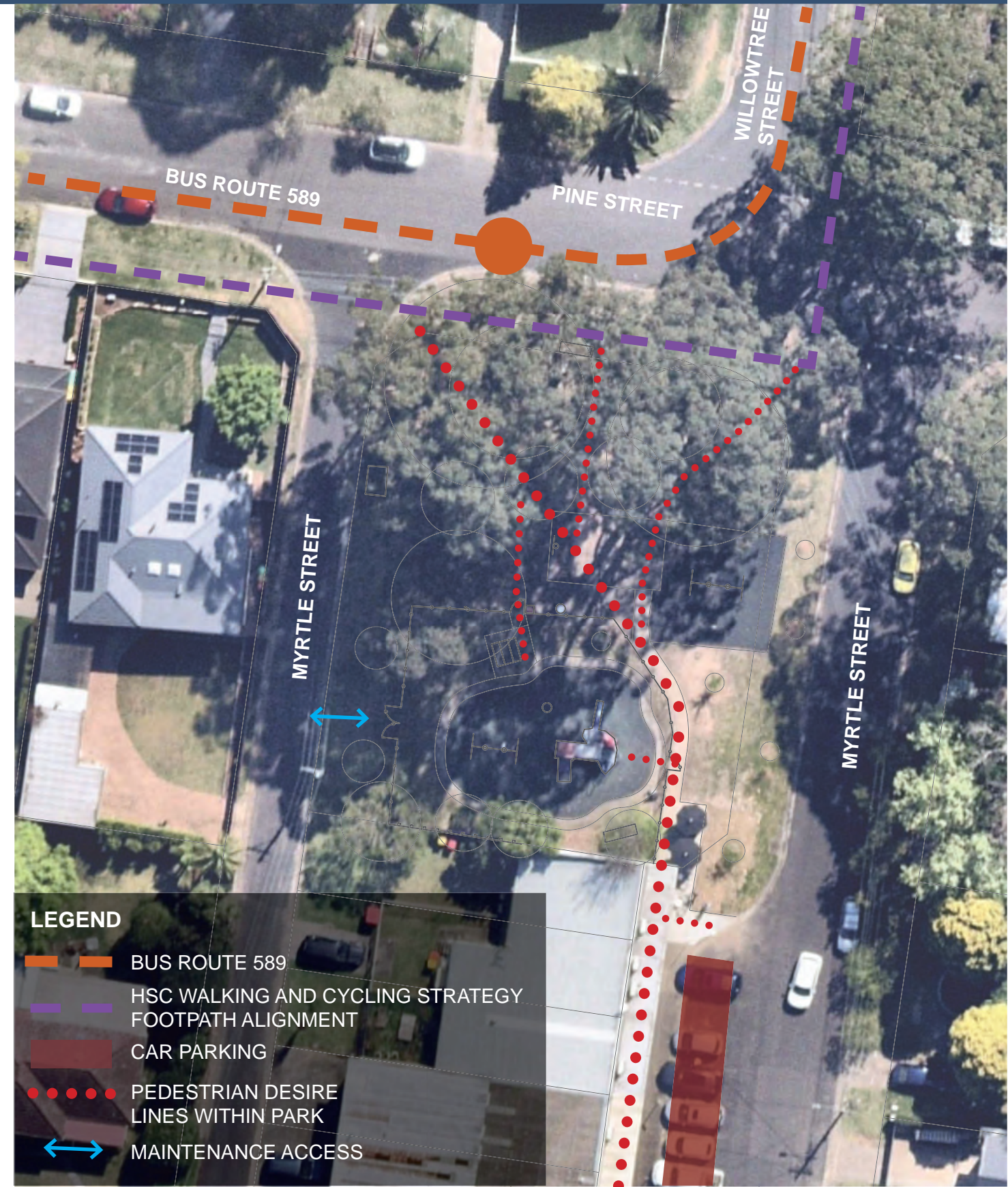
LARGE NATIVE TREES - EVERGREEN



SMALL EXISTING PARK TREES 4-6M



NEW TREES 2024



LEGEND

- BUS ROUTE 589
- HSC WALKING AND CYCLING STRATEGY FOOTPATH ALIGNMENT
- CAR PARKING
- PEDESTRIAN DESIRE LINES WITHIN PARK
- MAINTENANCE ACCESS

EXISTING CIRCULATION AND TRANSPORT

Parks, Trees and Recreation Branch
 Hornsby Shire Council
 296 Peats Ferry Road, Hornsby
 PO Box 37, Hornsby NSW 1630
 Telephone 9847 6666
 8.30am - 5pm Mon-Fri
hornsby.nsw.gov.au

CHARLES CURTIS PARK
SITE ANALYSIS
 PINE STREET, NORMANHURST
 OCTOBER 2024

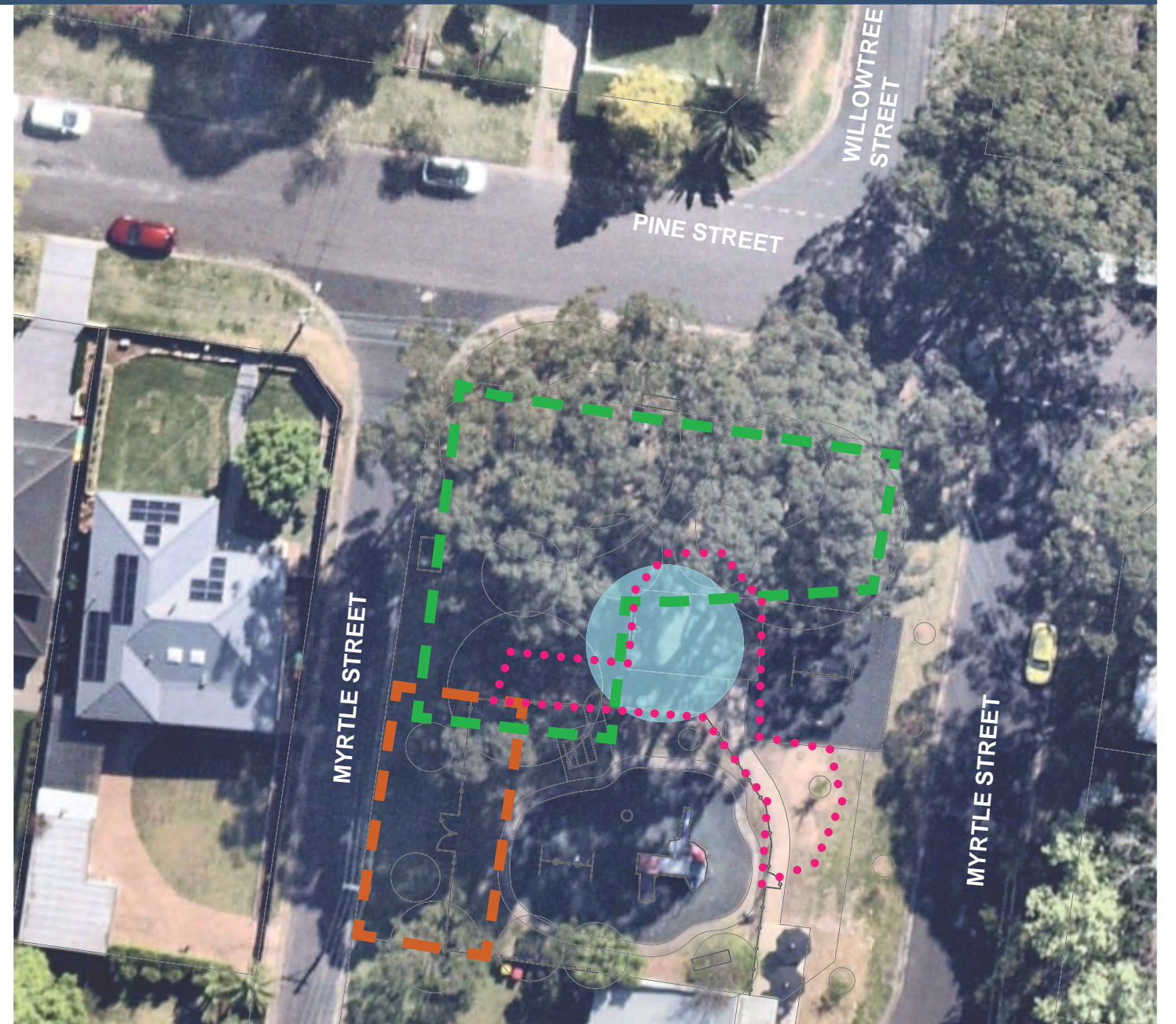




KEY

- | | | |
|---------------------------------------|-------------------------------------|---|
| 1 DOUBLE SWING WITH SLING SEATS | 6 OPEN LAWN AREA WITH DAPPLED SHADE | 12 BIN, LIGHT AND BUBBLER ALONG FENCELINE |
| 2 DOUBLE TODDLER SWING | 7 PICNIC SETTING | 13 PARK NAME SIGN |
| 3 STAND UP SPINNER | 8 BUS STOP WITH SEAT | 14 PARK SEAT WITH BACKREST |
| 4 PLATFORM STYLE PLAY UNIT WITH SLIDE | 9 BASKET BALL HOOP | 15 EXISTING PLAYGROUND FENCE |
| 5 TRIKE TRACK CIRCUIT | 10 CAFE SEATING AREA | |
| | 11 MAINTENANCE ACCESS | |

EXISTING SPACES AND ACTIVITIES



LEGEND

- | | |
|--|--|
| UNDER UTILISED AREA WITH LOW QUALITY TREES | AREA OF LARGE NATIVE TREES WITH SURFACE ROOTING IN CENTRAL AREAS |
| INTERSECTION OF DESIRE LINES | POOR QUALITY SURFACING IN NEED OF UPGRADE |

OPPORTUNITIES AND CONSTRAINTS

Parks, Trees and Recreation Branch

Hornsby Shire Council
296 Peats Ferry Road, Hornsby
PO Box 37, Hornsby NSW 1630

Telephone 9847 6666
8.30am - 5pm Mon-Fri

hornsby.nsw.gov.au

**CHARLES CURTIS PARK
SITE ANALYSIS
PINE STREET, NORMANHURST
OCTOBER 2024**

