

No stopping and no parking signs

No stopping sign

'No stopping' sign means you must not stop at any point on the road or kerb in the direction of the arrow, unless in an emergency.

'No stopping' areas are sometimes marked by an unbroken yellow edge line.

Restrictions may apply at certain times only. Hours of operation may apply to some signs.

- Disobey no stopping sign exceeds \$320.
- Disobey no stopping sign (school zone) exceeds \$410 2 pts.



No parking sign

You must not park on a road or in an area where there's a 'No parking' sign.

This may be all the time or at certain times, as shown on the sign.

You can stop for less than 2 minutes if you stay within 3m of your vehicle unless you are dropping off or picking up passengers or loading or unloading items.

- Disobey No Parking sign exceeds \$136.
- Disobey No Parking sign (school zone) \$227 2pts.



Obstructing driveways, ramps, paths, and passageways

Why is it illegal?

Obstructing a driveway even if it is to your own property is an offence as it prohibits access for emergency services such as the police, fire and rescue and ambulance.

- Stop on/across driveway/other access to/from land exceeds \$320.



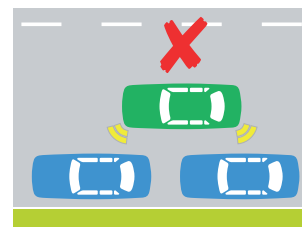
Obstructing a ramp, path or passageway can limit access points for prams and mobility impaired pedestrians, resulting in them having to use the roadway.

- Obstruct access to ramp/path/passageway exceeds \$320.

Double parking

You must not stop or park your vehicle: alongside another parked vehicle (double park) across a driveway unless you're picking up or dropping off passengers. on a median strip.

- Double Park exceeds \$320.
- Double Park (school zone) exceeds \$410 2pts.



Parking Education and Road Rules

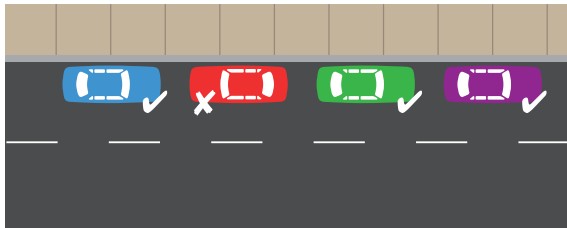
Commonly misunderstood parking rules

Discover information about parking and vehicle restrictions in the Hornsby Shire Council area to avoid fines and ensure safety for all road users.

Wrong direction of travel

Why is it illegal?

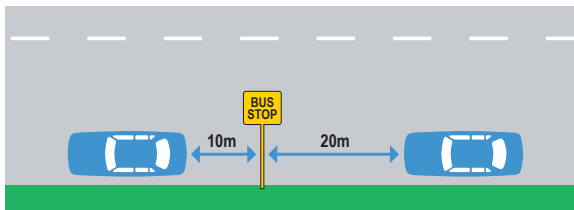
Parking in the wrong direction of travel is dangerous as the parked vehicle must travel on the wrong side of the road when departing. This maneuver exposes other road users to the risk of a head on collision.



- Not parallel park in direction of travel, penalty exceeds \$320.
- School Zone offence penalty exceeds \$387 and 2 demerit points.

Bus stop signs

You must not park within 20m before and 10m after a bus stop unless a sign says you can.



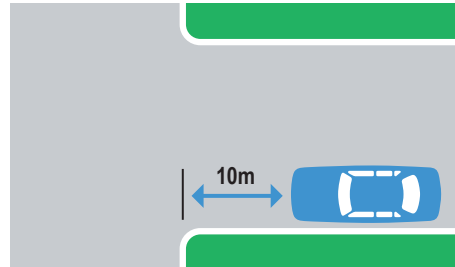
Space requirements for parking before or after a bus stop

- Stop at or near bus stop penalty exceeds \$320.
- Stop at or near bus stop (school zone) exceeds \$410 and 2 pts.

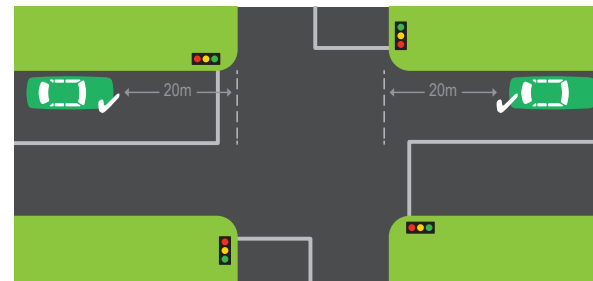
Parking too close to intersections

Parking within 10 metres of an intersecting road at an intersection without traffic lights is an offence unless the posted sign states otherwise.

- Stop within 10 metres of an intersection (no traffic lights) penalty exceeds \$410 and 2 pts.



Parking within 20 metres of an intersecting road with traffic lights is an offence unless the posted sign states otherwise.



- Stop within 20 metres of an intersection (traffic lights) penalty exceeds \$410 and 2pts.

Childrens crossings

Children's crossings are part-time crossings. They usually operate during school zone hours, and at other approved times and locations.

When a children's crossing is operating, it's marked by red orange flags at both sides. When you see the flags, you must slow down and stop before the

white stripes or 'Stop' line to give way to pedestrians. You must remain at a complete stop until all pedestrians have left the crossing.



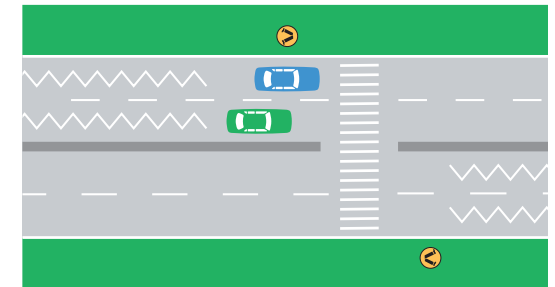
Orange flag at a children's crossing

If the flags are not displayed, it's not operating as a children's crossing.

Some children's crossings are controlled by school crossing supervisors. When you see a supervisor holding a 'Stop – children crossing' sign, you must slow down and stop.

You must remain at a complete stop until:

- all pedestrians have left the crossing, and
- the school crossing supervisor is no longer showing the sign.



- Stop on or near pedestrian crossing exceeds \$410 2pts.
- Stop on or near children's crossing exceeds \$410 2pts.
- Stop on or near pedestrian crossing (school zone) exceeds \$544 2pts.
- Stop on or near children's crossing (school zone) exceeds \$544 2pts.